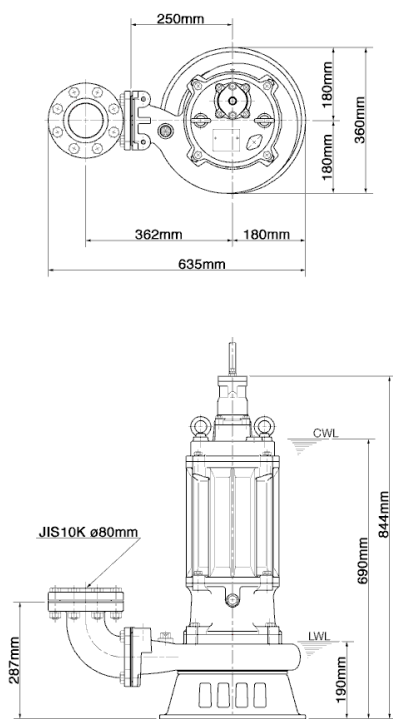
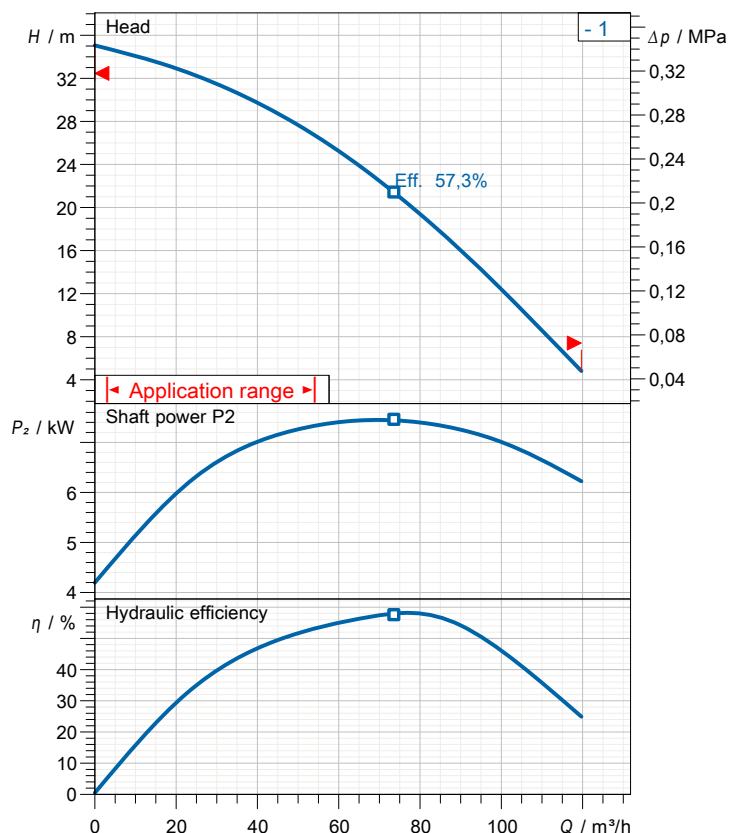


Data sheet 80SFQ27.5-52



80SFQ27.5-52 (A-11597-1)

CWL: Continuous running water level
 LWL: Lowest running water level



Specification

Elektrische Tauchpumpe SFQ-Serie
 Degree of protection IP 68
 Pressure resistance max. 15 m
 Type of impeller Semi-open
 Max. solid handling 30 mm
 Suitable for:
 corrosive liquids

Electric motor

Dry-type submersible induction motor
 Insulation class F 2 Poles 2945 1/min
 Starting mode Direct starting
 Rated voltage 400 V 50 Hz 3~
 Power uptake 8,68 kW
 Rated power 7,50 kW
 Rated current 14,3 A
 Start current 118,0 A

Cable

10m H07RN-F 4Cx4mm²

Motor Protection

Miniature protector in windings
 (snap-action bi-metal device)

Shaft seal

Double inside mechanical seal in oil bath
 additional lubrication by oil lifting device
 Primary seal
 Silicon carbide on silicon carbide
 Secondary seal
 Silicon carbide on silicon carbide

Bearings

Shielded ball bearings, maintenance-free

Materials

Impeller	SCS14 (SUS GX5CrNiMo19-11-2)
Pump casing	SCS14 (SUS GX5CrNiMo19-11-2)
Suction cover	SCS14 (SUS GX5CrNiMo19-11-2)
Motor Frame	SCS14 (SUS GX5CrNiMo19-11-2)
Shaft	SUS316 (EN-X5CrNiMo17-12-2)

Discharge size

80mm JIS10K flange

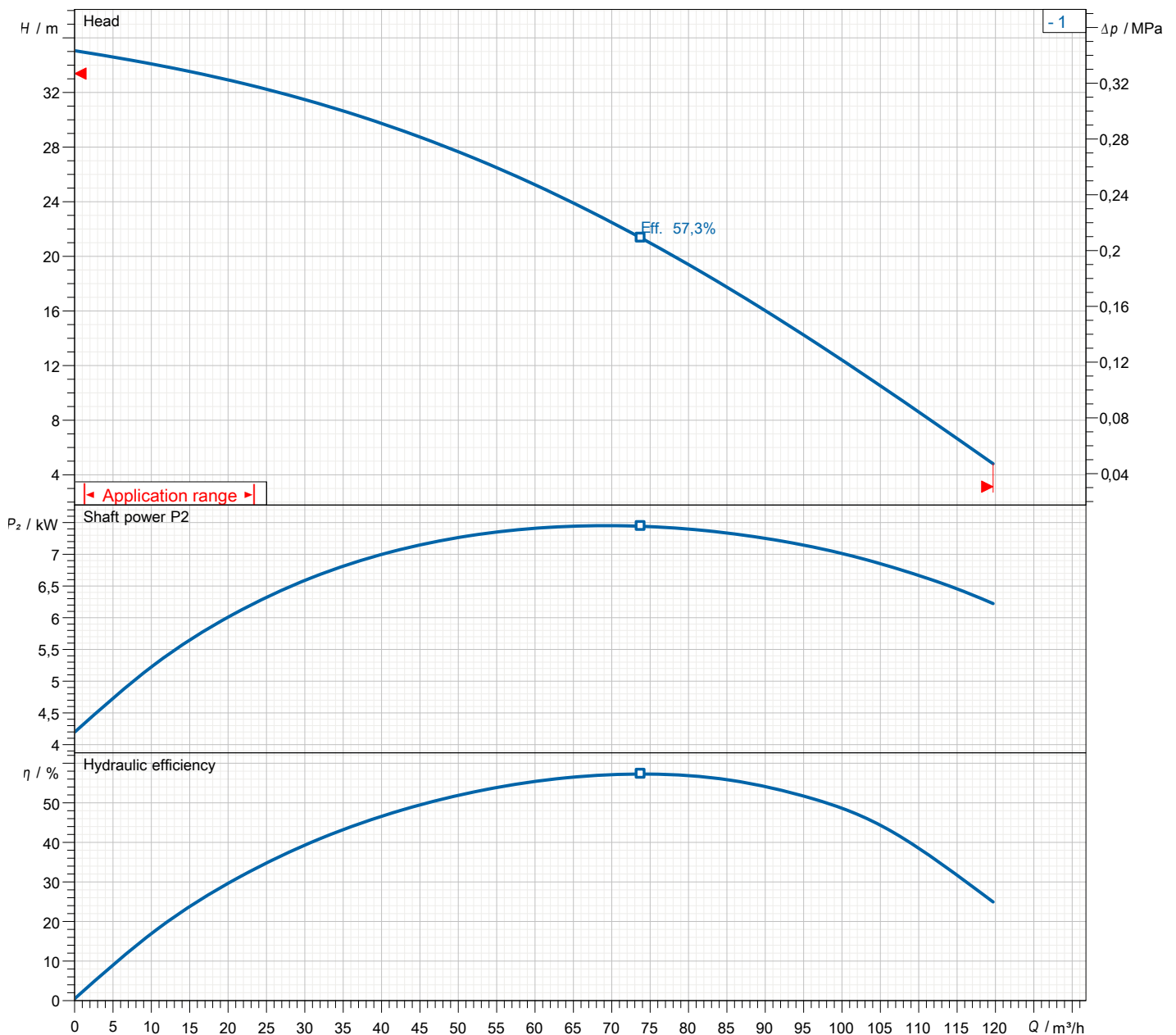
Weight

123 kg (dry weight of the pump only without cable)

Performance curve

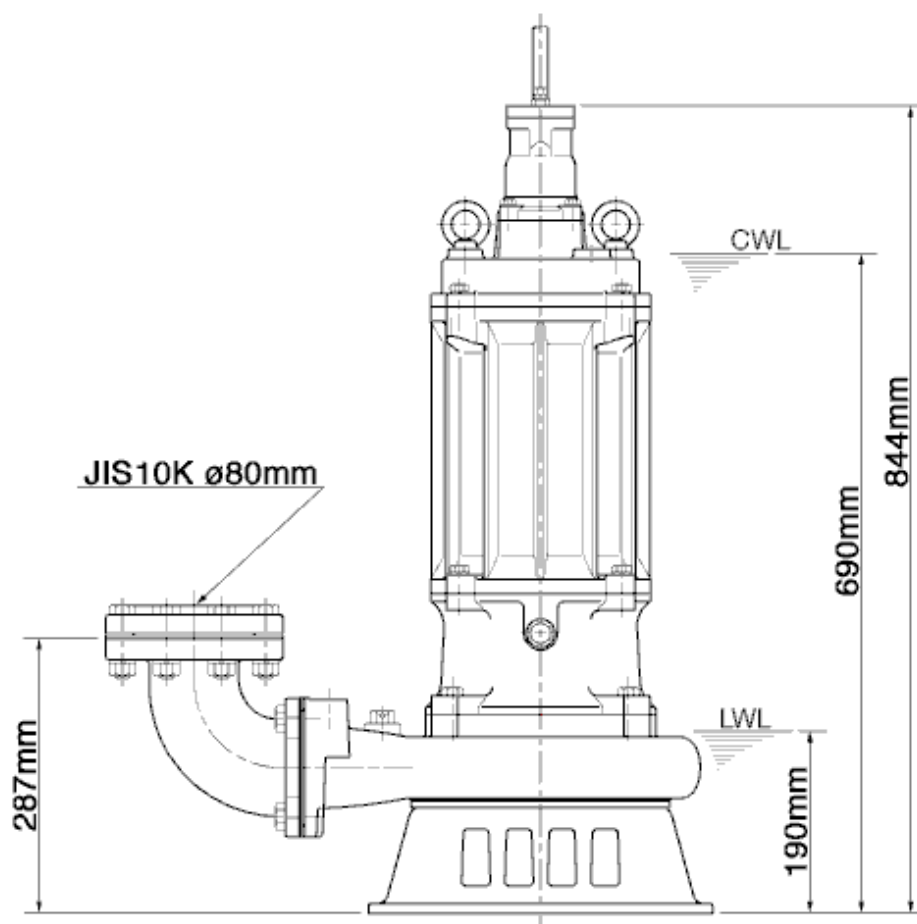
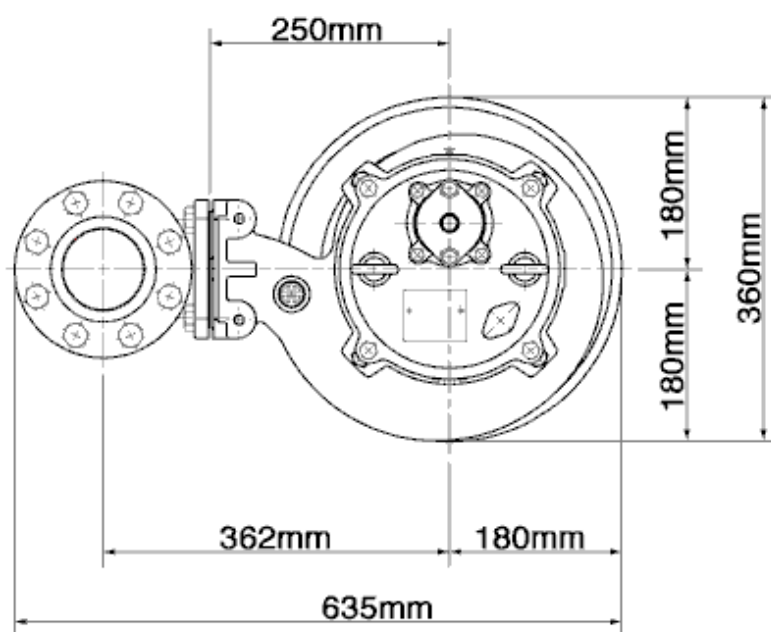
80SFQ27.5-52

Discharge port	3"
FördH	35,1 m
Flow	119,7 m³/h
Rated power	7,50 kW
Power input	8,68 kW
Phases	3~
Voltages	400 V
Frequency	50 Hz
Rated current	14,3 A
Starting current	117,98 A
Number of poles	2
Speed	2945 1/min
Starting mode	Direct starting
Insulation class	F



Dimensions

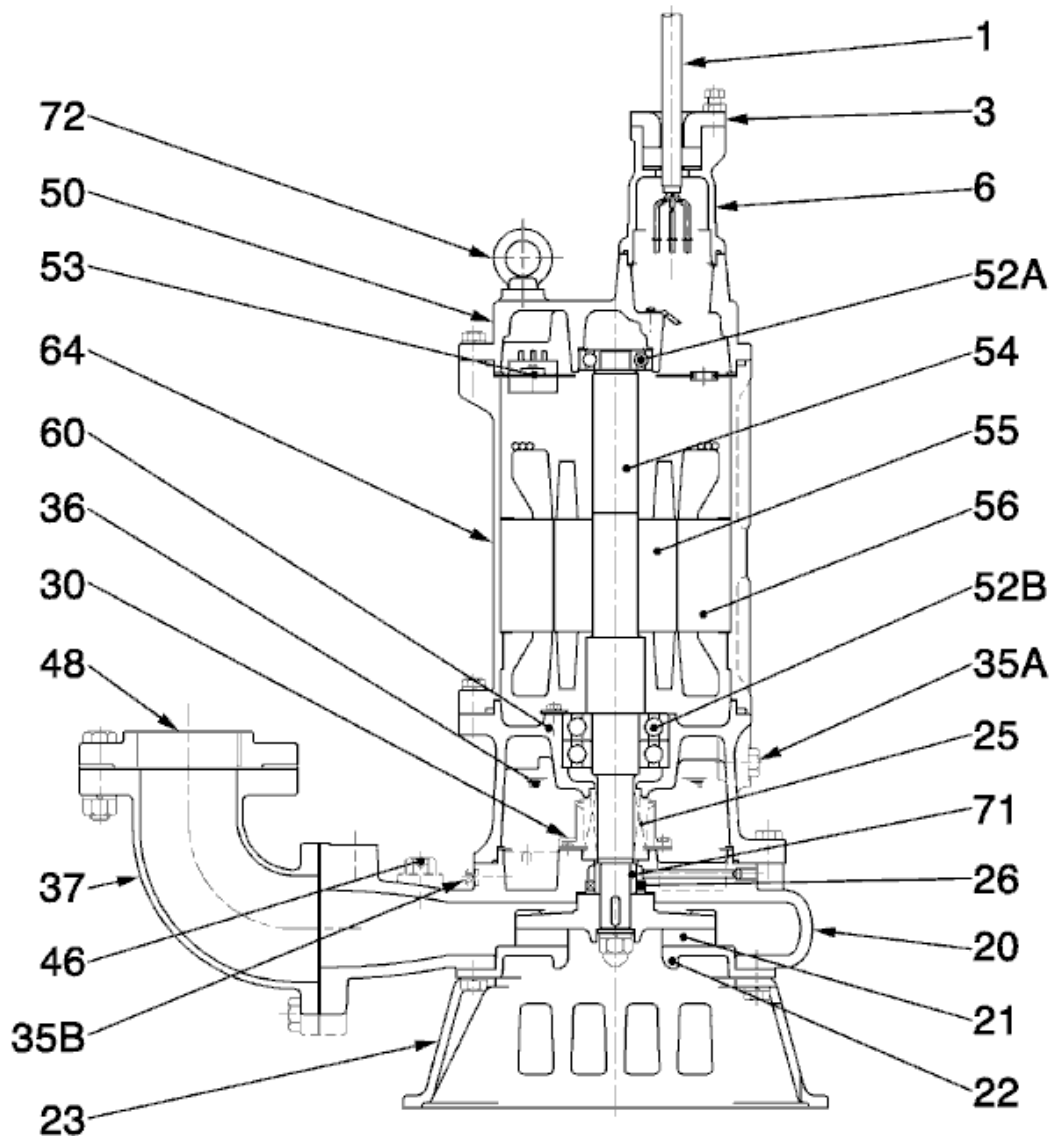
80SFQ27.5-52



80SFQ27.5-52 (A-11597-1)

CWL: Continuous running water level
LWL: Lowest running water level

Sectional drawing 80SFQ27.5-52



No.	Description	Remark	No.	Description	Remark
1	Cable	10m 4Cx5,5mm ²	52B	Lower bearing	6308ZZD2C3
3	Gland	SCS14 (SUS GX5CrNiMo19-11-2)	53	Motor Protector 380/400/415V-50Hz KA314-HRXL00 (H.C)	
6	Stuffing box	SCS14 (SUS GX5CrNiMo19-11-2)	54	Shaft	SUS316 (EN-X5CrNiMo17-12-2)
20	Pump casing	SCS14 (SUS GX5CrNiMo19-11-2)	55	Rotor	.
21	Impeller	SCS14 (SUS GX5CrNiMo19-11-2)	56	Stator	.
22	Suction cover	SCS14 (SUS GX5CrNiMo19-11-2)	60	Bearing Housing	SCS14 (SUS GX5CrNiMo19-11-2)
23	Strainer	SCS14 (SUS GX5CrNiMo19-11-2)	64	Motor Frame	SCS14 (SUS GX5CrNiMo19-11-2)
25	Mechanical seal	X-30W	71	Shaft protection sleeve	SUS316 (EN-X5CrNiMo17-12-2)
26	Oil seal	TC35508	72	Eye screw (2x)	SUS316 (EN-X5CrNiMo17-12-2)
30	Oil distributor	Plastic			
35A	Oil screw	SUS316 (EN-X5CrNiMo17-12-2)			
35B	Oil screw	SUS316 (EN-X5CrNiMo17-12-2)			
36	Lubricant	Turbine oil (ISO VG32)			
46	Air vent valve	SUS316 (EN-X5CrNiMo17-12-2)			
50	Motor cover	SCS14 (SUS GX5CrNiMo19-11-2)			
52A	Upper bearing	6305ZZC3			