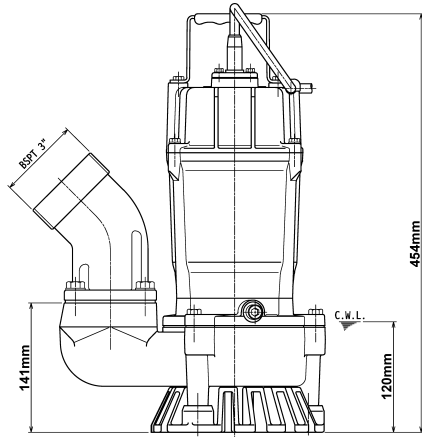
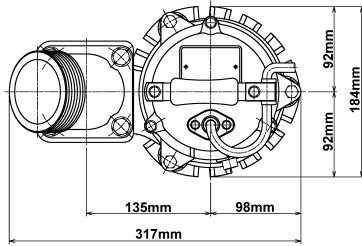


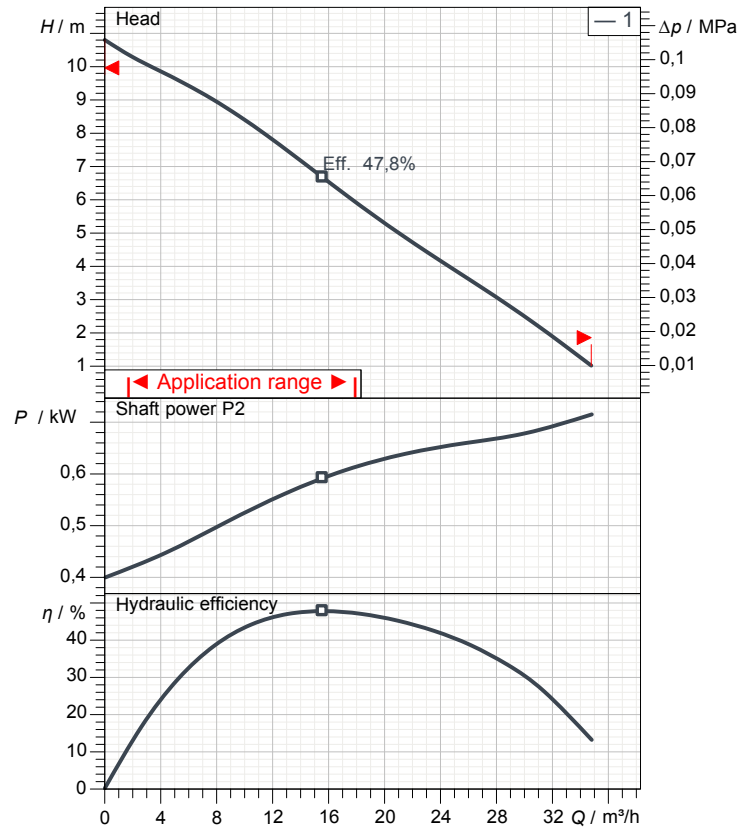
# Data sheet HS3.75SL-52

+31 (0)314 368 444  
www.distrimex.nl



HS3.75SL-52

CWL: Continuous running water level



## Specification

Electric submersible pump HS-series  
Degree of protection IP 68  
Pressure resistance max. 10 m  
Type of impeller semi-vortex  
Max. solid handling 7 mm  
Suitable for:  
rain water, ground water, sand water

## Electric motor

Dry-type submersible induction motor  
Insulation class E 2Poles 2830 1/min  
Starting mode  
Rated voltage 230 V 50 Hz 1~  
Power uptake 1,06 kW  
Rated power 0,75 kW  
Rated current 4,8 A  
Start current 14,6 A

## Cable

10m H07RN8-F 3Cx1mm²

## Motor Protection

Miniature protector in windings  
(snap-action bi-metal device)

## Shaft seal

Double inside mechanical seal in oil bath  
additional lubrication by oil lifting device  
Primary seal  
Silicon carbide on silicon carbide  
Secondary seal  
Carbon on ceramic

## Bearings

Shielded ball bearings, maintenance-free

## Materials

Impeller	Urethane rubber
Pump casing	FCD700 (EN-GJS-700-2)
Motor Frame	Aluminium die casting
Shaft	SUS403 (EN-X6Cr13)

## Discharge size

3" (80mm) BS-Coupling / Hose Coupling (optional)

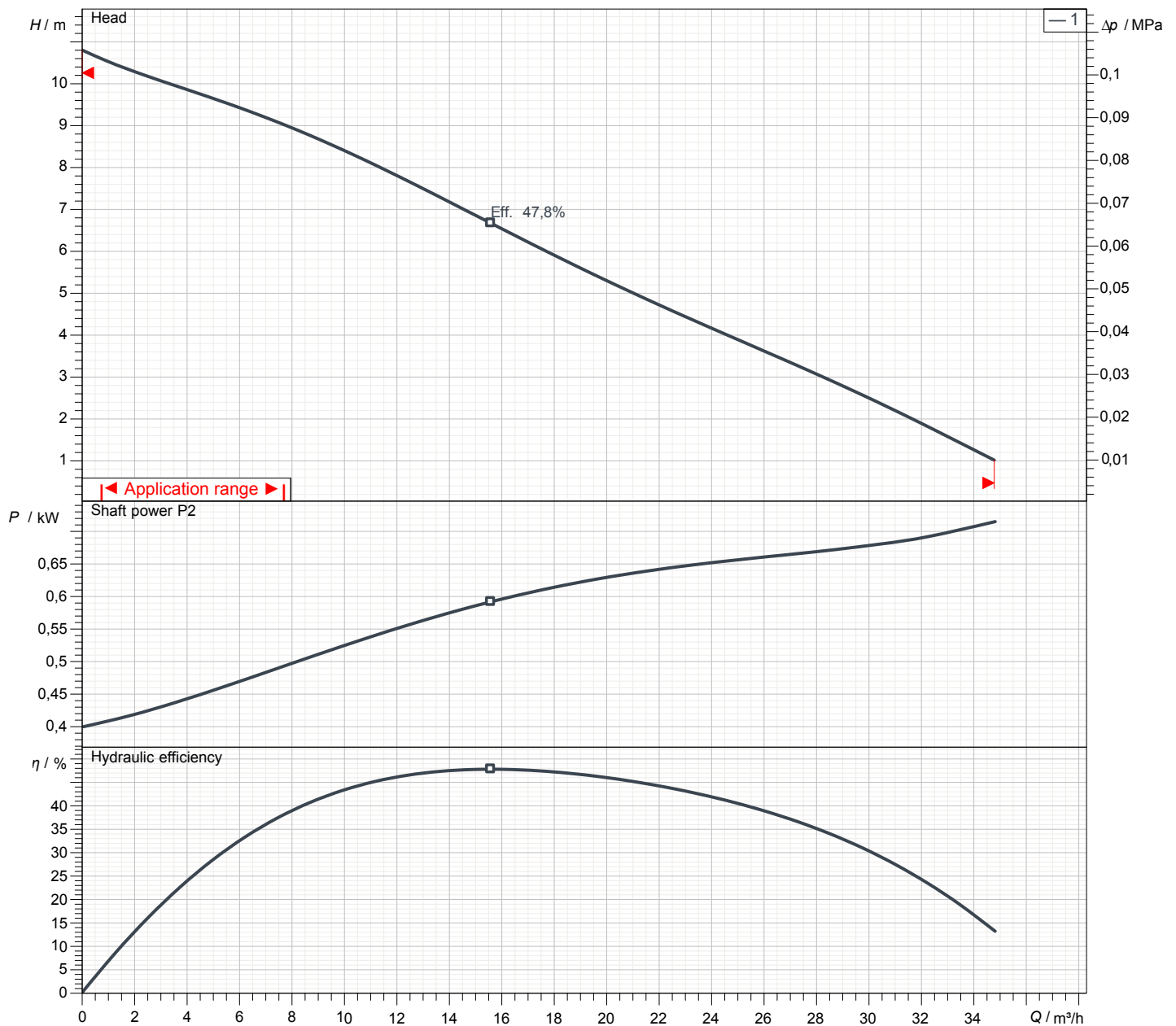
## Weight

19,6 kg (dry weight of the pump only without cable)

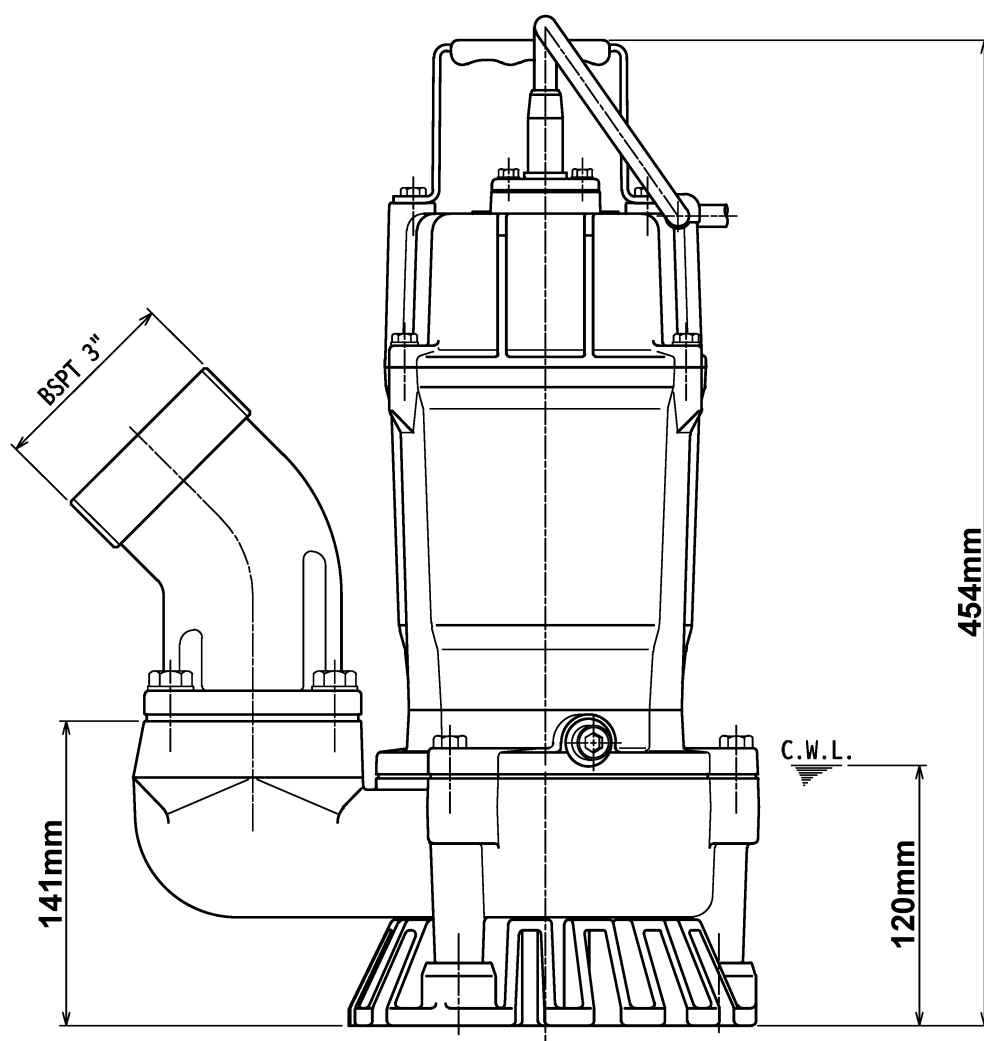
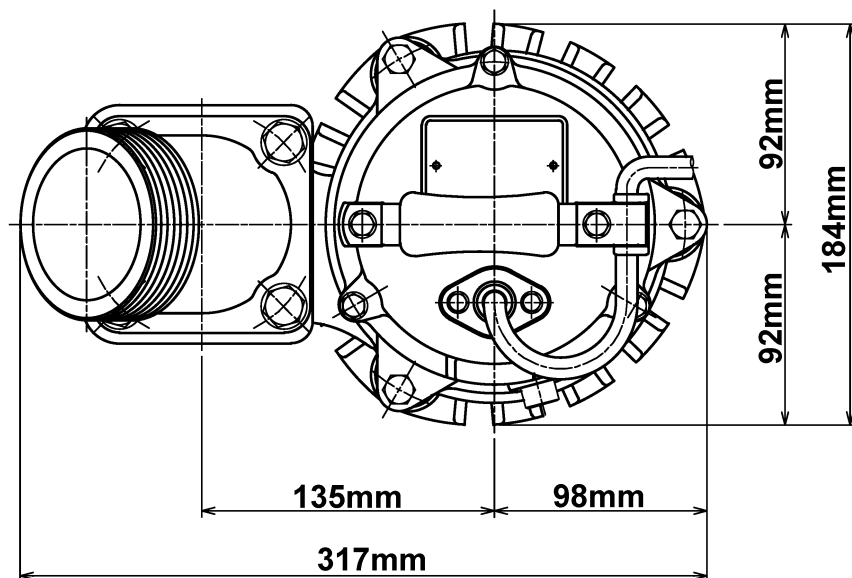
# Performance curve

## HS3.75SL-52

Discharge port	3"
Head	10,8 m
Flow	34,8 m³/h
Rated power	0,75 kW
Power input	1,06 kW
Phases	1~
Voltages	230 V
Frequency	50 Hz
Rated current	4,8 A
Starting current	14,60 A
Number of poles	2
Speed	2830 1/min
Starting mode	
Insulation class	E



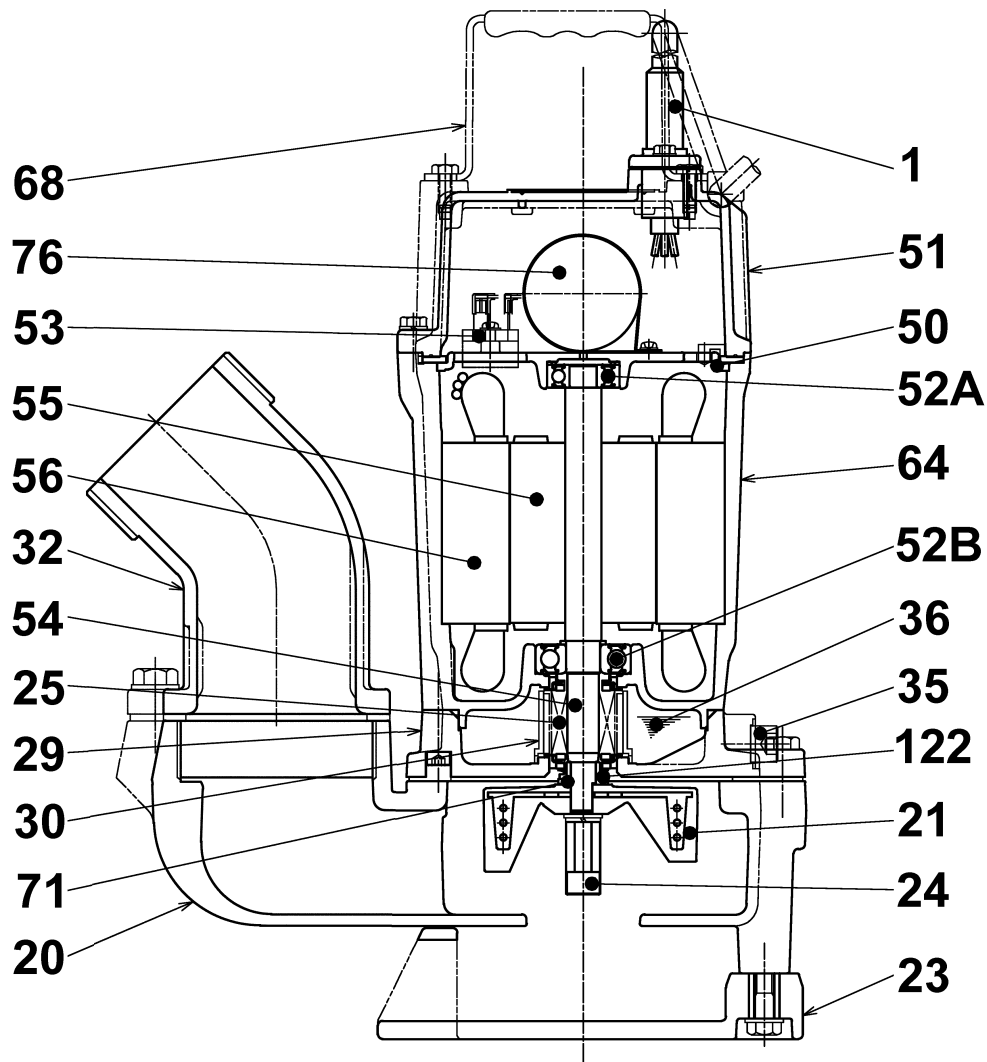
# HS3.75SL-52



## HS3.75SL-52

**CWL: Continuous running water level**  
**LWL: Lowest running water level**

# Sectional drawing HS3.75SL-52



HS3.75SL-52

No.	Description	Remark	No.	Description	Remark
1	Cable	H07RN-F3Cx1mm=x10m	53	Motor Protector 380/400/415V-50Hz KA314-HRXL00 (H.C)	
20	Pump casing	FCD700 (EN-GJS-700-2)	54	Shaft	SUS403 (EN-X6Cr13)
21	Impeller	Urethane rubber	55	Rotor	.
23	Strainer	PVC	56	Stator	.
24	Agitator	Sintered alloy	64	Motor Frame	Aluminium die casting
25	Mechanical seal	W-14VL	68	Handle	Steel plate / natural rubber
26	V-ring	Butadiene-acrylonitrile-rubber	71	Shaft protection sleeve	SUS304 (EN-X5CrNi18-10)
29	Oil casing	FC200 (EN-GJL-200)	76	Condenser	.
30	Oil distributor	Plastic			
32	Discharge coupling	Aluminium die casting			
35	Oil screw	SUS304 (EN-X5CrNi18-10)			
36	Lubricant	Turbine oil (ISO VG32)			
50	Motor cover	Aluminium die casting			
51	Main cover	Aluminium die casting			
52A	Upper bearing	6201ZZC3			
52B	Lower bearing	6302ZZC3			