


# UTN-L / UTN-BL 25-25-160



Comply to :  
2006/42/CE

ISO 5199 - UNI 15783

ATEX 100   
Directive 2014/34/EU

Flanged  
UNI 1092-2 (ISO 7005-2 )  
PN16RF type B  
slotted ANSI 150RF



UTN-BL PFA  
CLOSE COUPLED EXECUTION

PFA Lined Magnetic Driven Pump - Single Stage - Process Centrifugal Pump  
Specifically designed for low flow applications, to cover flow range from  
**1 to 12 m<sup>3</sup>/h**

## Advantages

No more flow by-pass for low flow application.

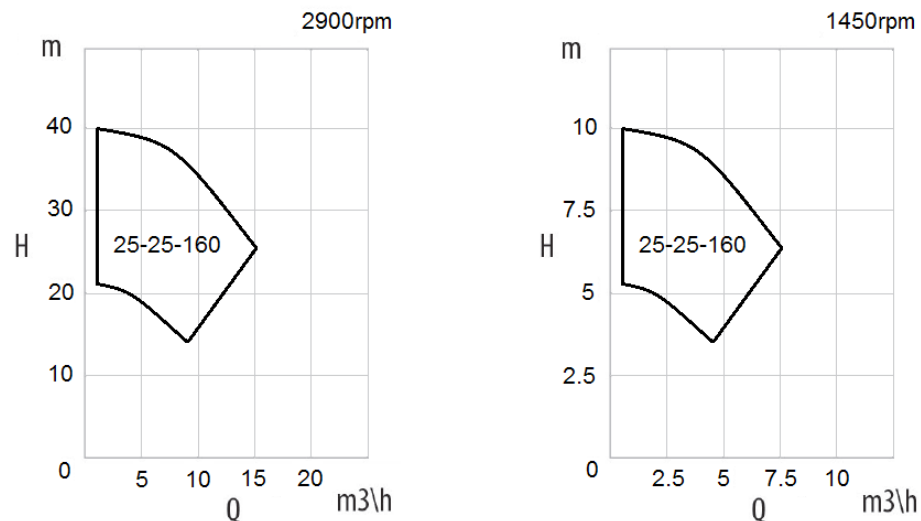
No more waste of energy, recirculating useless flow.

Huge process flexibility: available flow rates from 1 to 12 m<sup>3</sup>/h.

Available in close coupled and bare shaft execution.

On request, available also with mechanical seal execution, for fluids with solid particles.

## Performance field



Not binding data refers to water at room temperature. For specific performance curve contact CDR Pompe s.r.l.

### Versatility

Suitable for handling corrosive, aggressive and hazardous liquids (low viscosity, clean or slightly contaminated) in the chemical, petrochemical and Pharma industries, where the need of high safety standards is the first requirement.

### Reliability

The pump is equipped with reliable grease lubricated bearing bracket, especially developed to be suitable even under heavy duty service.

### Design

UTN range have been developed focusing on chemical industry's requests.

## Application Fields

Petrochemical Processing



Fertilizer Processing



Basic Chemical Processing



Air Treatment



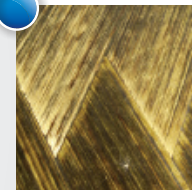
Fine Chemical Processing



Detergents Processing



Fibre Processing



Active Pharmaceutical Ingredients

