

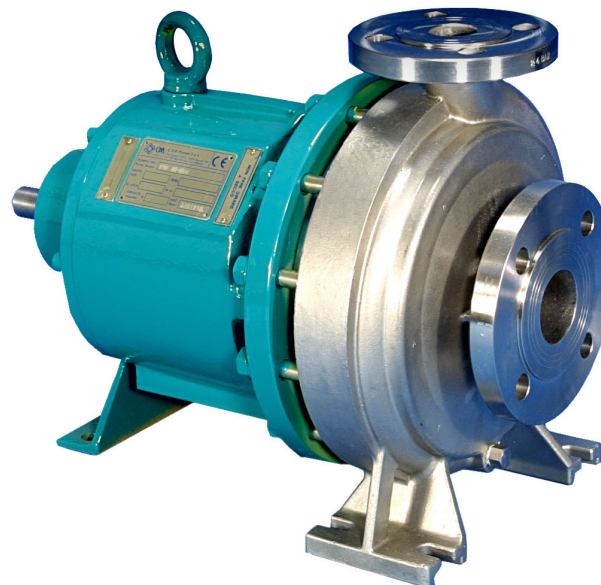
XTS- B / XTS

XTS-B closed coupled



For fluids with organic solids, chemical precipitations and suspensions

New mag-driven pump suitable for dirty liquids



XTS bare shaft

Stainless Steel Magnetic drive Horizontal - Single Stage - Centrifugal pumps

MAIN ADVANTAGES:

- Zero leakage thanks to magnetic driven execution
- Reduced cost of installation: no double mechanical seals and external flushing system.
- No process contamination with external flushing fluid, when double mechanical seals fail

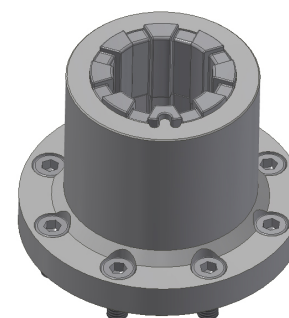
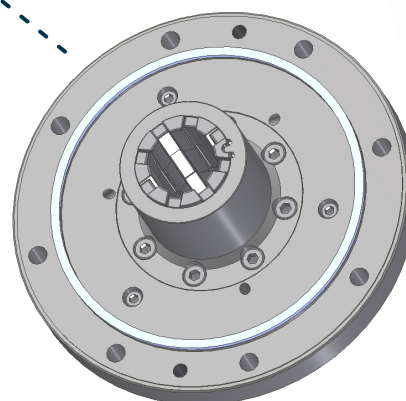
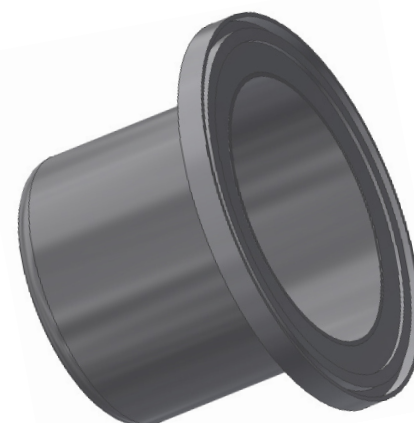
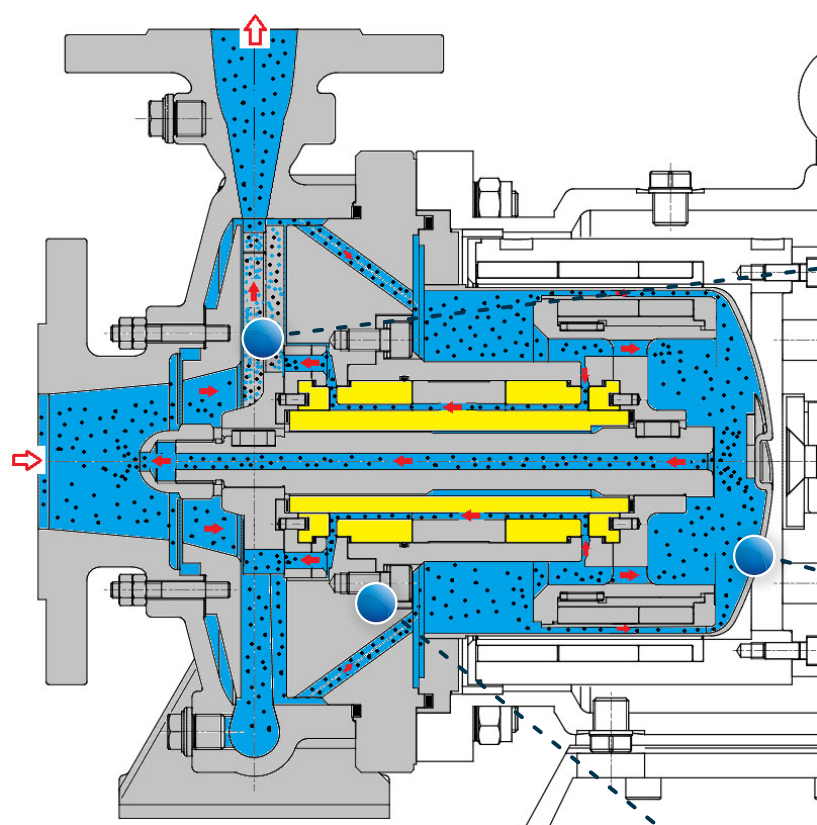


Comply to :
2006/42/CE

Design to : ISO 2858
ISO 15783

ATEX 100 
Directive 2014/34/EU

Flanged
UNI 1092-2 (ISO 7005-2)
PN16RF type B
slotted ANSI 150RF



Internal circulation of liquid and particles:

- Fluid and particles are pressurized by impeller and circulate through the large paths inside the pump;
- Fluid circulation assures cooling and lubrication of bushes;
- Fluid and particles come back to suction through the central canal in pump shaft.

Open impeller:

Extremely low axial thrust, resulting in low mechanical solicitations of bushes. Suitable for solid particles. It centrifuge soft particles agglomerates

Isolation shell:

Executed in Hastelloy-C to minimize eddy-current, minimum thickness 1mm
 On request, Zirconium Oxyde execution, for top abrasion resistance and zero eddie-current

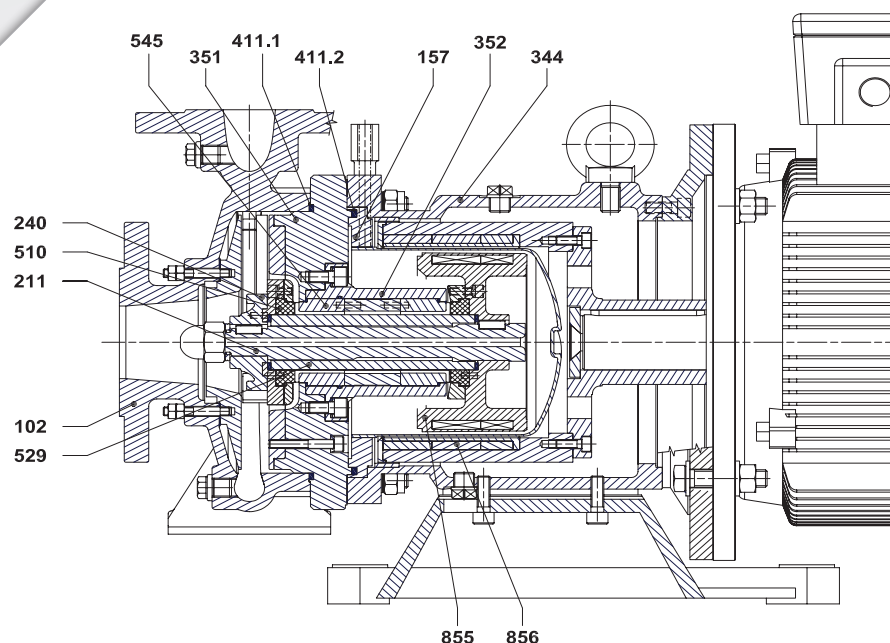
Bushes:

Executed in diamond coated SSIC, with genoerous canals for optimal circulation of liquid and particles. Diamond coating protects bushes in case of short dry run and from abrasion of particles.

Bushes support:

Two pieces cartridge execution for fast and less expensive maintenance.

XTS-B



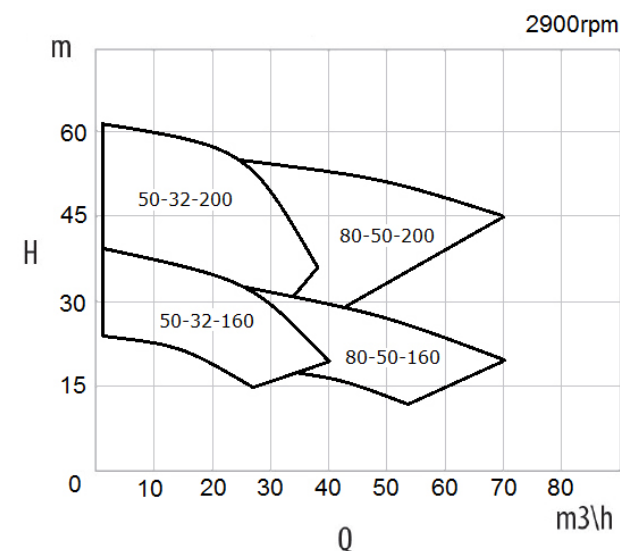
Part list

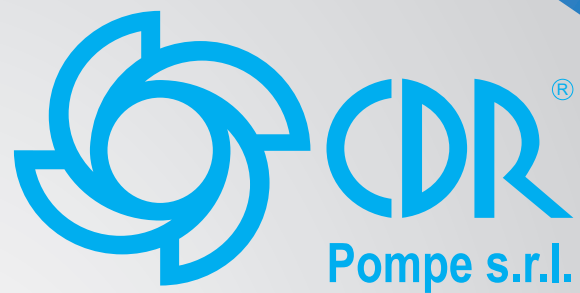
DIN	Component	Materials
102	Volute Casing	AISI 316 (1.4408-CF8M)
157	Isolation Shell	Hastelloy C + AISI 316L
211	Pump Shaft	AISI 316 (1.4401)
240	Impeller	AISI 316 (1.4401-CF8M)
344	Lantern	EN-GJS-400-15
351	Bushing Support: Flange	AISI 316 (1.4401)
352	Bushing Support: Seat	AISI 316 (1.4401)
411.x	Joint Ring	PTFE \ Grafoil
510	Thrust Bearing	Run Safe Sintered SSIC
529	Bearing Sleeve	Run Safe Sintered SSIC
545	Bearing Bush	Run Safe Sintered SSIC
855	Inner Magnet	AISI 316L (1.4404) / SmCo
856	Outer Magnet	EN-GJS-400-15/Ryton/NdFeB

Technical Specifications

Performances 2900 rpm	Q max = 70 m ³ /h -> H max = 61 mcl
Electric Motors	0.75 kW (motor size 80) -> 18,5 kW (motor size 160)
Temperature range	<ul style="list-style-type: none"> • XTS-B -40°C up to +180°C • XTS -40°C up to +300°C
Allowable Pressure Range	up to 16 bar
Suction / Delivery	<ul style="list-style-type: none"> • 50-32-160 : DN50/DN32 • 50-32-200 : DN50/DN32 • 80-50-160 : DN80/DN50 • 80-50-200 : DN80/DN50
Flange connections	UNI 1092-2 / ISO 7005-2 PN 16, type B slotted to ASME /ANSI class 150
Viscosity	Consult factory
Allowable Solids	Consult factory

Performance fields 50Hz





+31 (0)314 368 444
www.distrimex.nl



For further info, please visit:
www.distrimex.nl

Technical Characteristics

The technical data and characteristics stated in this General Catalogue are not binding. CDR Pompe S.r.l. reserves the right to make modifications without notice. Therefore data, dimensions, performances and any other stated issues are indicative only and not binding.