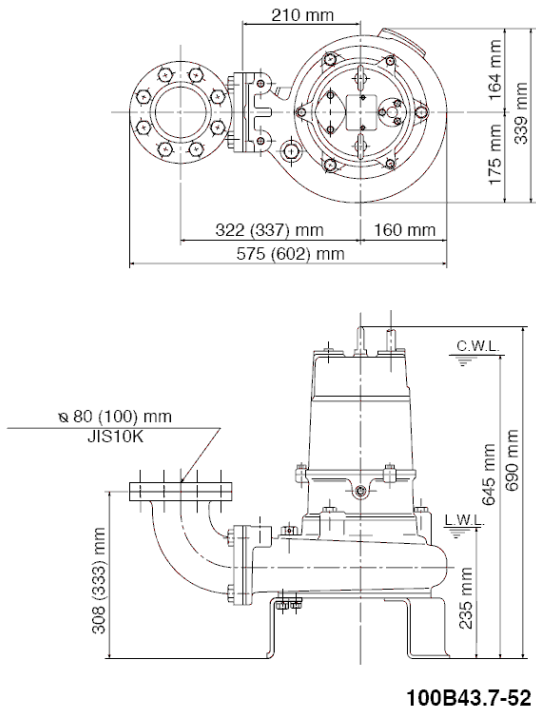
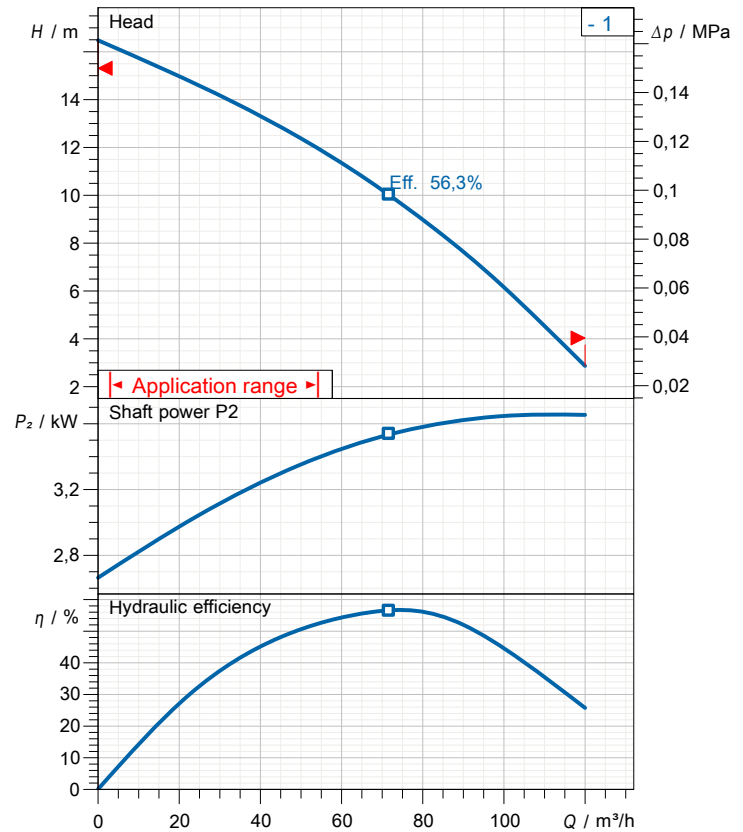


Data sheet 100B43.7-52



CWL: Continuous running water level
 LWL: Lowest running water level



Specification

Elektrische Tauchpumpe B-Serie
 Degree of protection IP 68
 Pressure resistance max. 15 m
 Type of impeller single channel impeller
 Free passage 53 mm
 Suitable for:
 sewage water

Electric motor

Dry-type submersible induction motor
 Insulation class E 4Poles 1410 1/min
 Starting mode Direct starting
 Rated voltage 400 V 50 Hz 3~
 Power uptake 4,59 kW
 Rated power 3,70 kW
 Rated current 7,9 A
 Start current 49,0 A

Cable

10m H07RN-F 4Cx1,5mm²

Motor Protection

Circle thermal protector
 (snap-action bi-metal device)

Shaft seal

Double inside mechanical seal in oil bath
 additional lubrication by oil lifting device
 Primary seal
 Silicon carbide on silicon carbide
 Secondary seal
 Ceramic on carbon

Bearings

Shielded ball bearings, maintenance-free

Materials

Impeller	FC200 (EN-GJL-200)
Pump casing	FC200 (EN-GJL-200)
Suction cover	FC200 (EN-GJL-200)
Motor Frame	FC200 (EN-GJL-200)
Shaft	SUS420J2 (EN-X30Cr13)

Discharge size

4" (100mm) JIS 10K screwed-in mating flange
 guide rail fitting optional

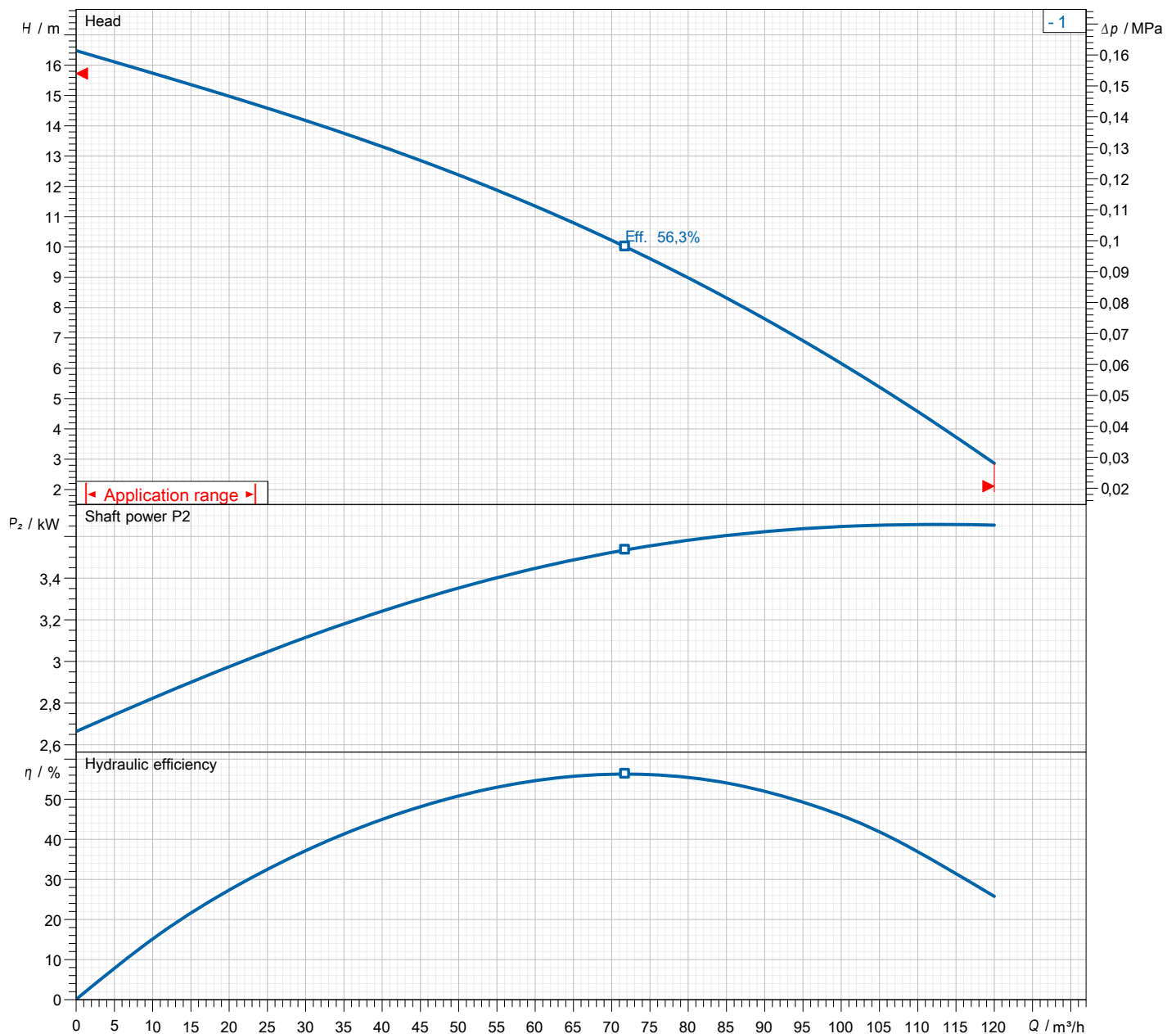
Weight

86 kg (dry weight of the pump only without cable)

Performance curve

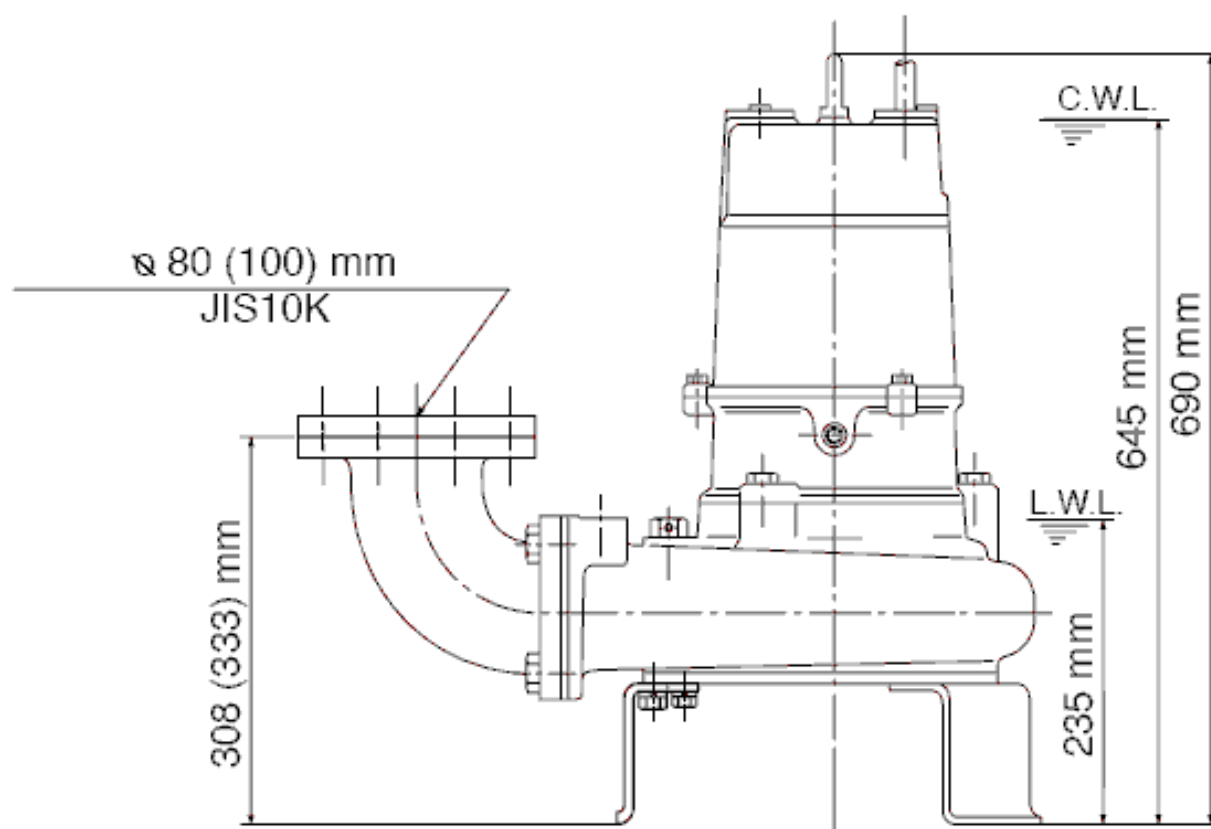
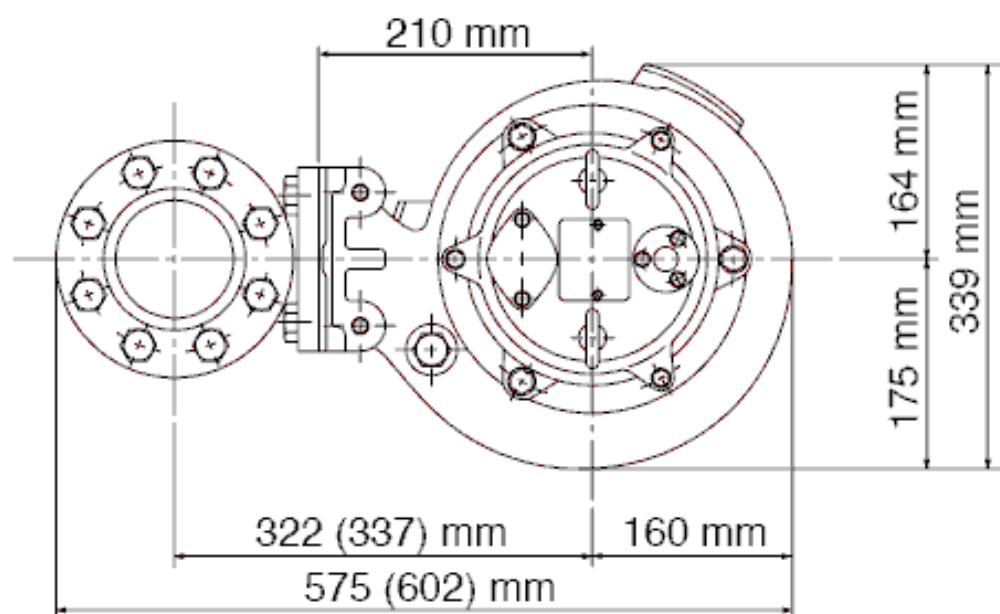
100B43.7-52

Discharge port	4"
FördH	16,5 m
Flow	120,0 m³/h
Rated power	3,70 kW
Power input	4,59 kW
Phases	3~
Voltages	400 V
Frequency	50 Hz
Rated current	7,9 A
Starting current	48,98 A
Number of poles	4
Speed	1410 1/min
Starting mode	Direct starting
Insulation class	E



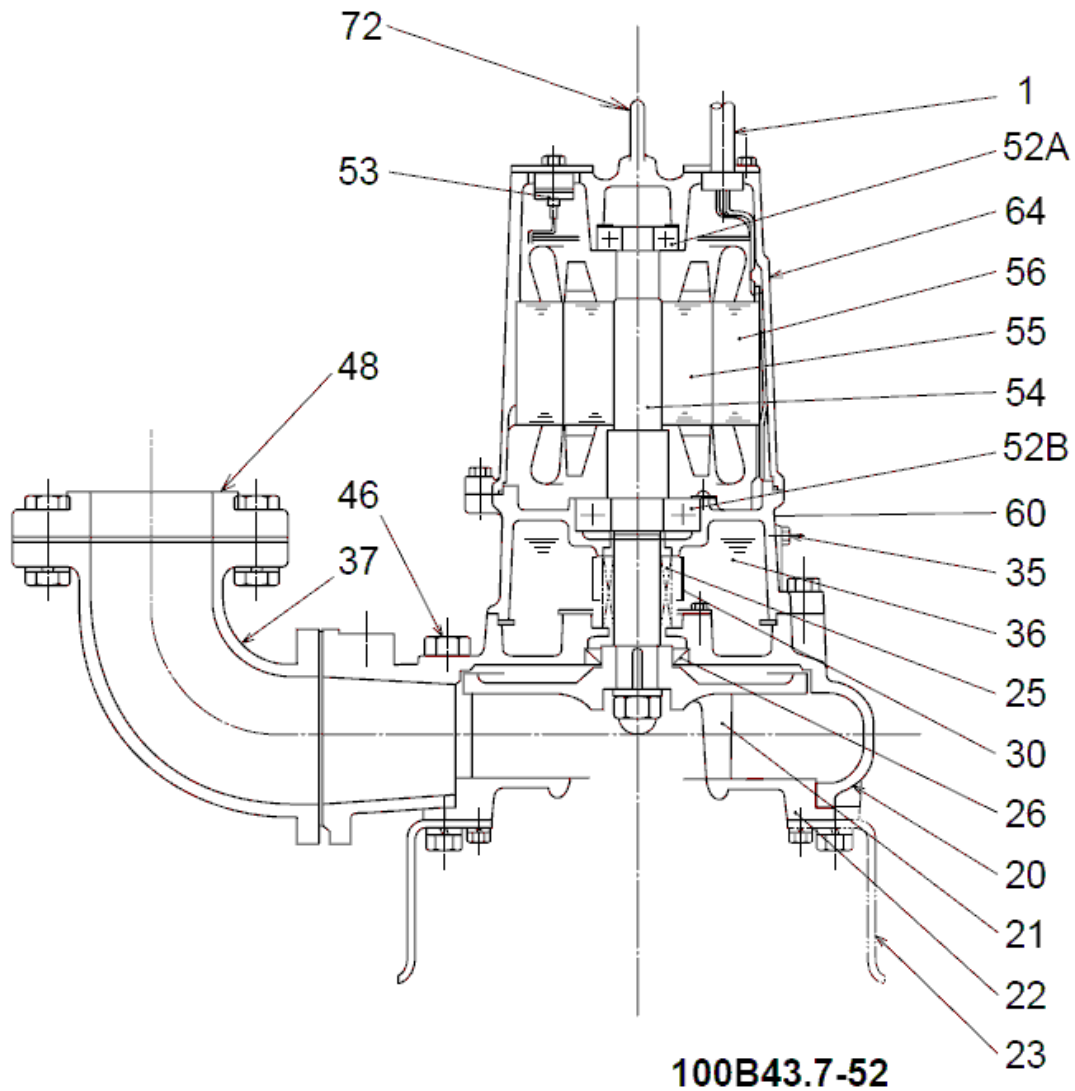
Dimensions

100B43.7-52



100B43.7-52

Sectional drawing 100B43.7-52



100B43.7-52

No.	Description	Remark	No.	Description	Remark
1	Cable	H07RN-F	54	Shaft	SUS420J2 (EN-X30Cr13)
20	Pump casing	FC200 (EN-GJL-200)	55	Rotor	.
21	Impeller	FC200 (EN-GJL-200)	56	0--	.
22	Suction cover	FC200 (EN-GJL-200)	60	Bearing Housing	FC200 (EN-GJL-200)
23	Stand support (3x)	Construction steel SS400	64	Motor Frame	FC200 (EN-GJL-200)
25	Mechanical seal	H-35A	72	Eye screw (2x)	SUS304 (EN-X5CrNi18-10)
26	Oil seal	TC507212			
30	Oil distributor	Plastic			
35	Oil screw	SUS304 (EN-X5CrNi18-10)			
36	Lubricant	Turbine oil (ISO VG32)			
37	Discharge bend	FC200 (EN-GJL-200)			
46	Air vent screw	Nylon			
48	Screwed Flange	FC200 (EN-GJL-200)			
52A	Upper bearing	6304ZZC3			
52B	Lower bearing	6309ZZC3			
53	Motor Protector 380/400/415V-50Hz	KA314-HRXL00 (H.C)			