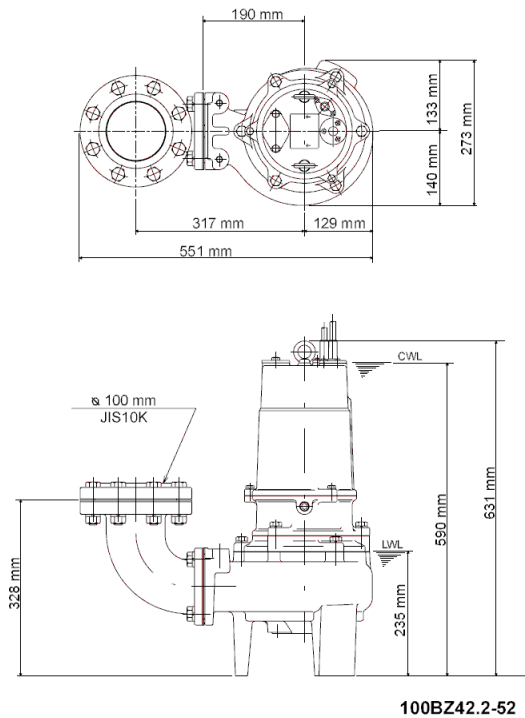
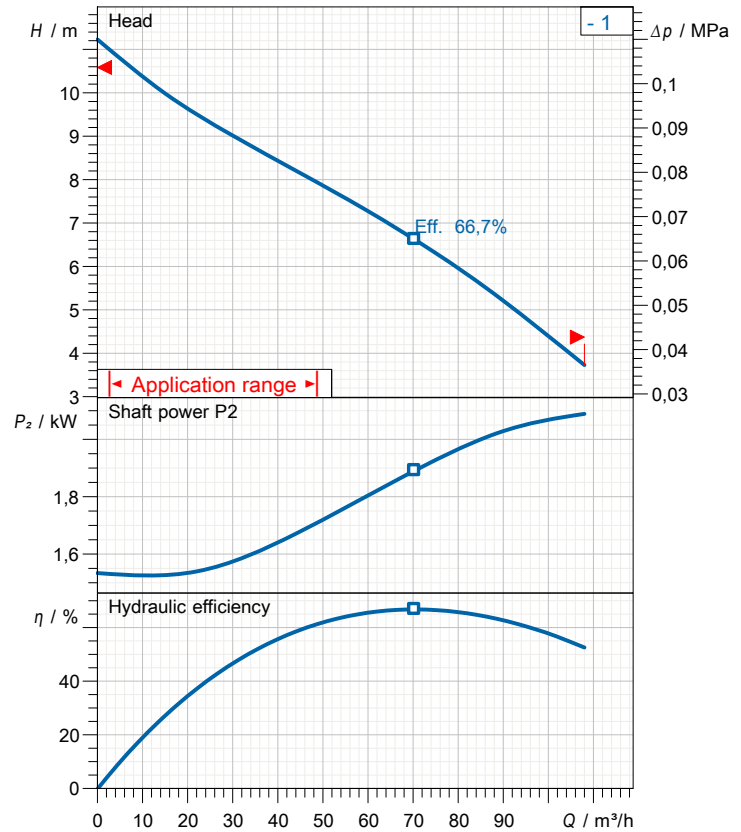


Data sheet 100BZ42.2-52



CWL: Continuous running water level
 LWL: Lowest running water level



Specification

Elektrische Tauchpumpe BZ-Serie
 Degree of protection IP 68
 Pressure resistance max. 15 m
 Type of impeller single channel impeller
 Free passage 80 mm
 Suitable for:
 sewage water

Electric motor

Dry-type submersible induction motor
 Insulation class F 4 Poles 1420 1/min
 Starting mode Direct starting
 Rated voltage 400 V 50 Hz 3~
 Power uptake 3,04 kW
 Rated power 2,20 kW
 Rated current 5,3 A
 Start current 32,0 A

Cable

10m H07RN-F 4Cx1,5mm²

Motor Protection

Miniature protector in windings
 (snap-action bi-metal device)

Shaft seal

Double inside mechanical seal in oil bath
 additional lubrication by oil lifting device
 Primary seal
 Silicon carbide on silicon carbide
 Secondary seal
 Silicon carbide on silicon carbide

Bearings

Shielded ball bearings, maintenance-free

Materials

Impeller	FC200 (EN-GJL-200)
Pump casing	FC200 (EN-GJL-200)
Motor Frame	FC150 (EN-GJL-150)
Shaft	SUS420J2 (EN-X30Cr13)

Discharge size

4" (100mm) JIS 10K screwed-in mating flange
 guide rail fitting optional

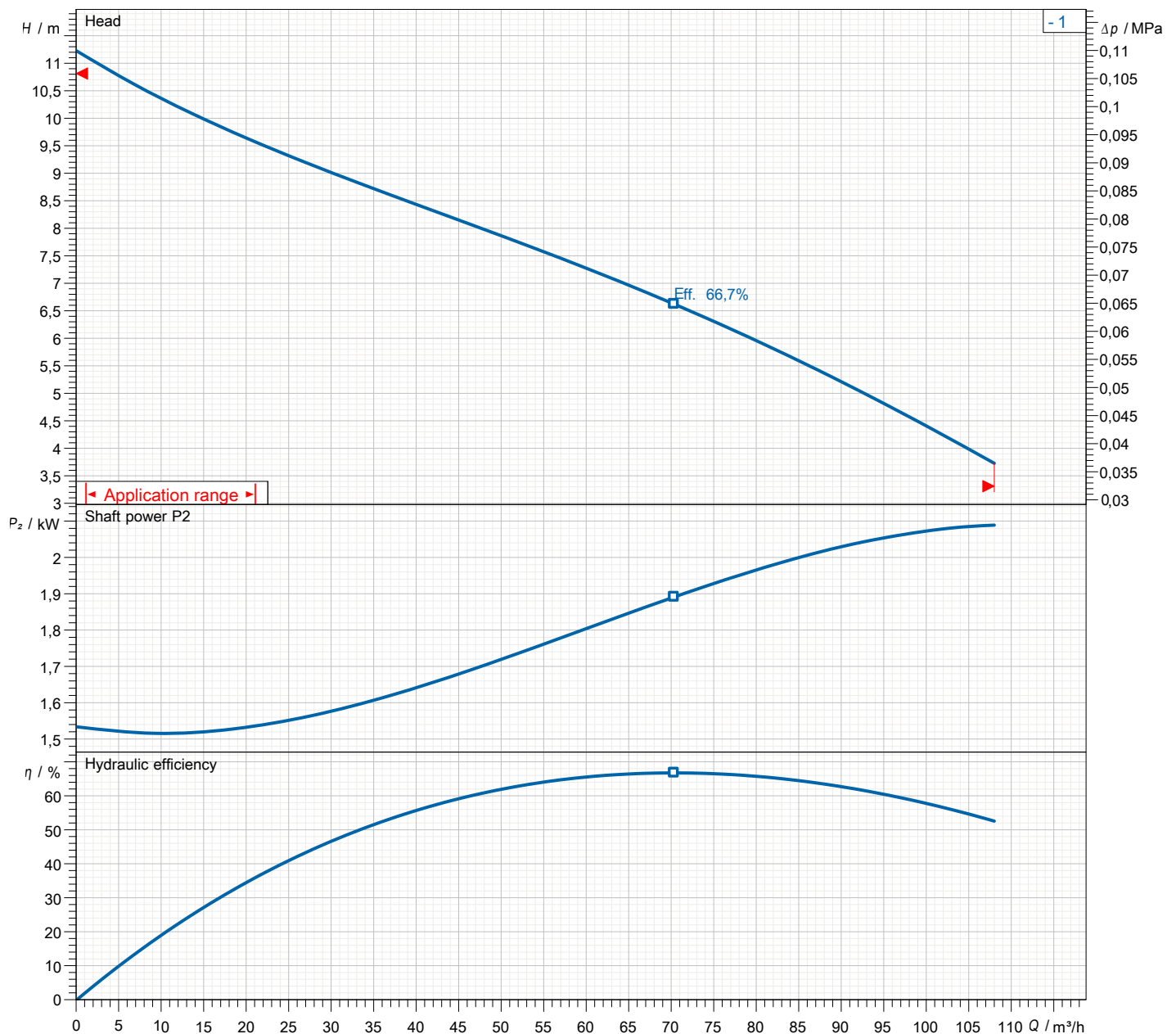
Weight

80 kg (dry weight of the pump only without cable)

Performance curve

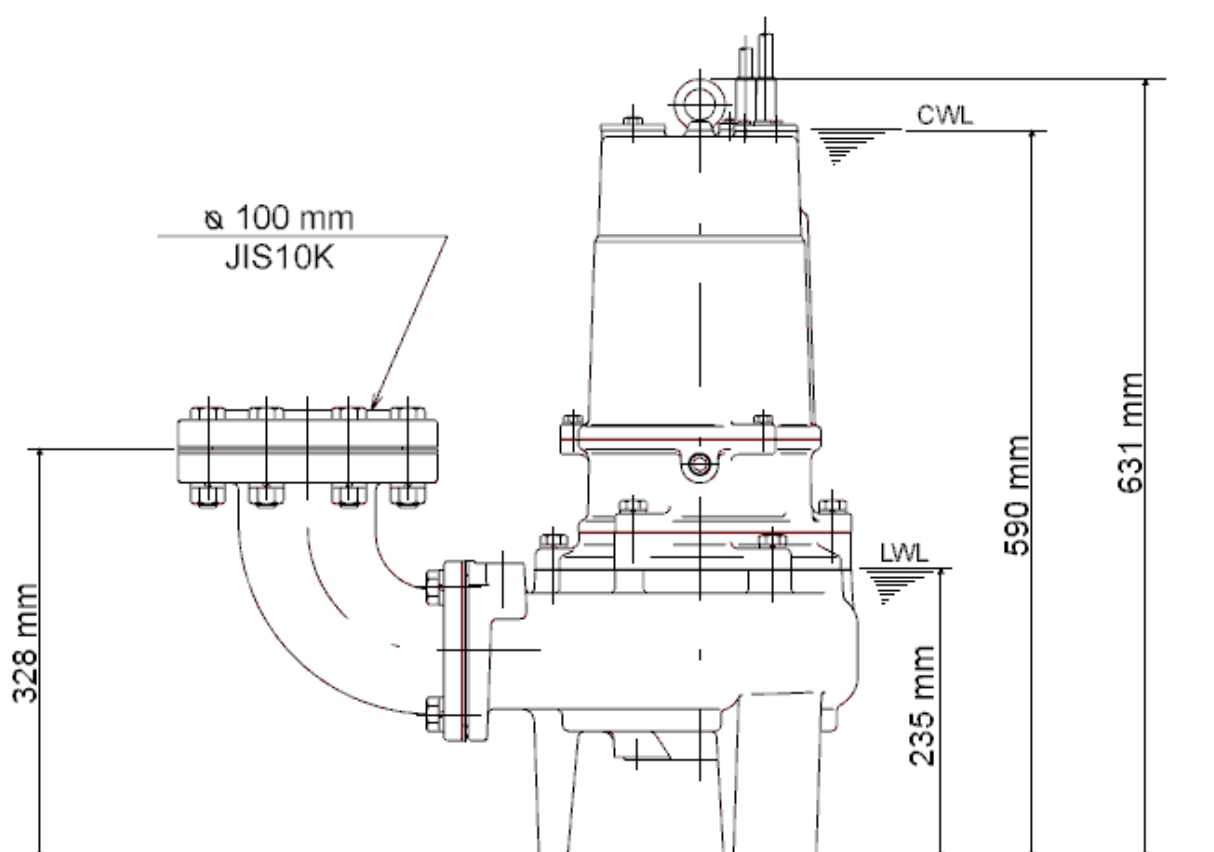
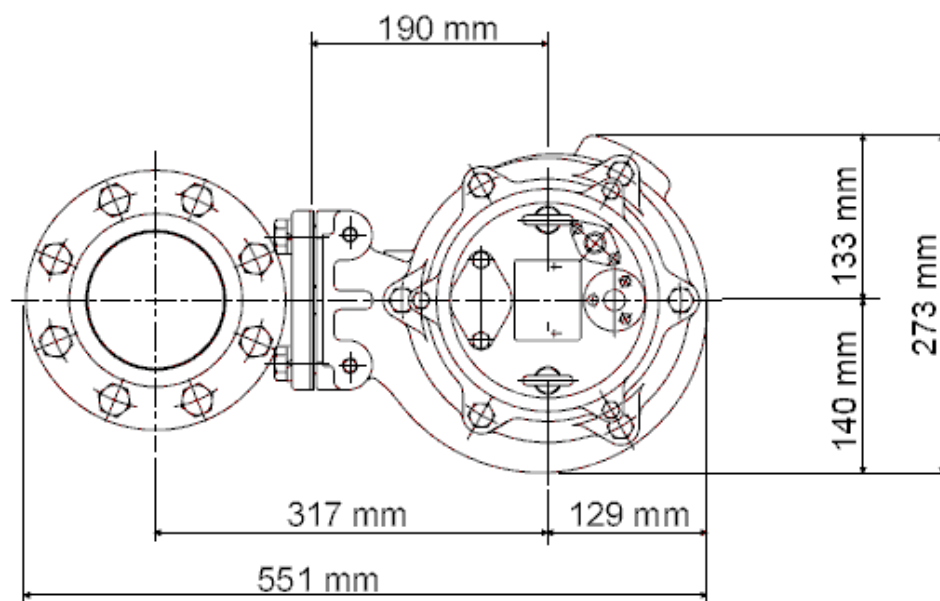
100BZ42.2-52

Discharge port	4"
FördH	11,2 m
Flow	108,0 m³/h
Rated power	2,20 kW
Power input	3,04 kW
Phases	3~
Voltages	400 V
Frequency	50 Hz
Rated current	5,3 A
Starting current	32,01 A
Number of poles	4
Speed	1420 1/min
Starting mode	Direct starting
Insulation class	F



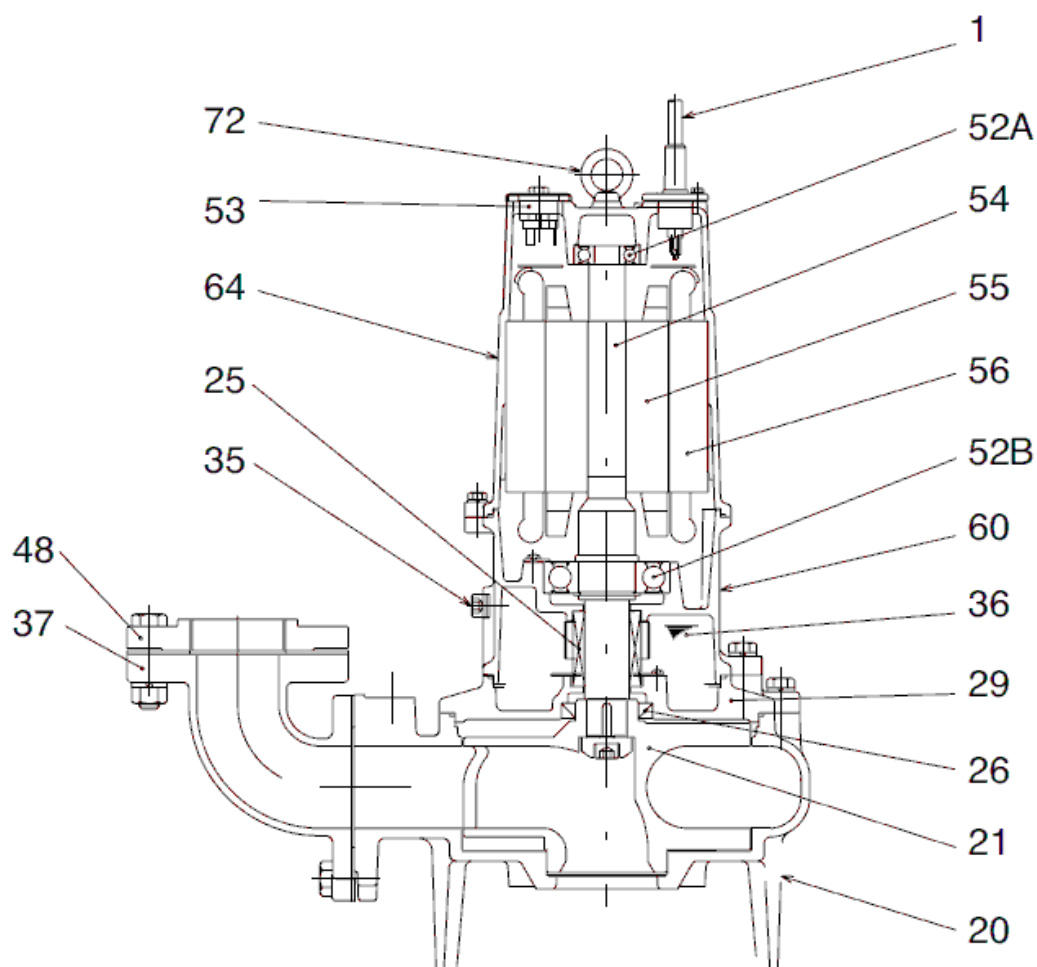
Dimensions

100BZ42.2-52



100BZ42.2-52

Sectional drawing 100BZ42.2-52



100BZ42.2-52

No.	Description	Remark	No.	Description	Remark
1	Cable	H07RN-F	56	Oil seal	TC456812
1b	Cable Theroguard	VCT4Cx1,25SQ	60	Bearing Housing	FC150 (EN-GJL-150)
20	Pump casing	FC200 (EN-GJL-200)	64	Motor Frame	FC150 (EN-GJL-150)
21	Impeller	FC200 (EN-GJL-200)	72	Eye screw (2x)	SUS304 (EN-X5CrNi18-10)
25	Mechanical seal	H-30A			
26	Oil seal	TC456812			
29	Oil casing	FC200 (EN-GJL-200)			
35	Oil screw	SUS304 (EN-X5CrNi18-10)			
36	Lubricant	Turbine oil (ISO VG32)			
37	Discharge bend	FC200 (EN-GJL-200)			
48	Screwed Flange	FC200 (EN-GJL-200)			
52A	Upper bearing	6304ZZC3			
52B	Lower bearing	6307ZZC3			
53	Circle thermal protector (3x)	.			
54	Shaft	SUS420J2 (EN-X30Cr13)			
55	Rotor	.			