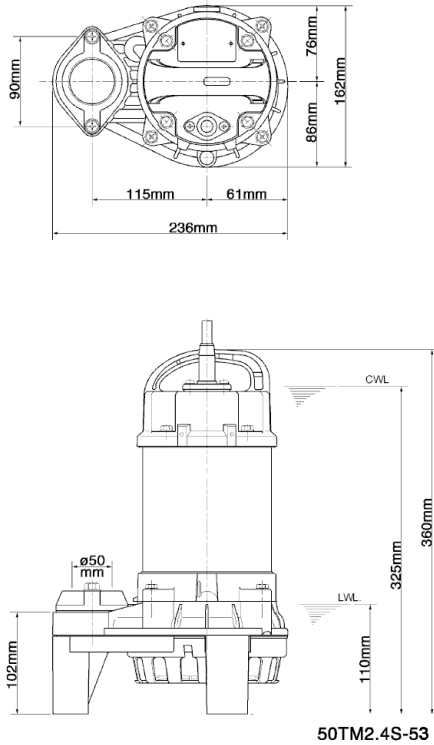
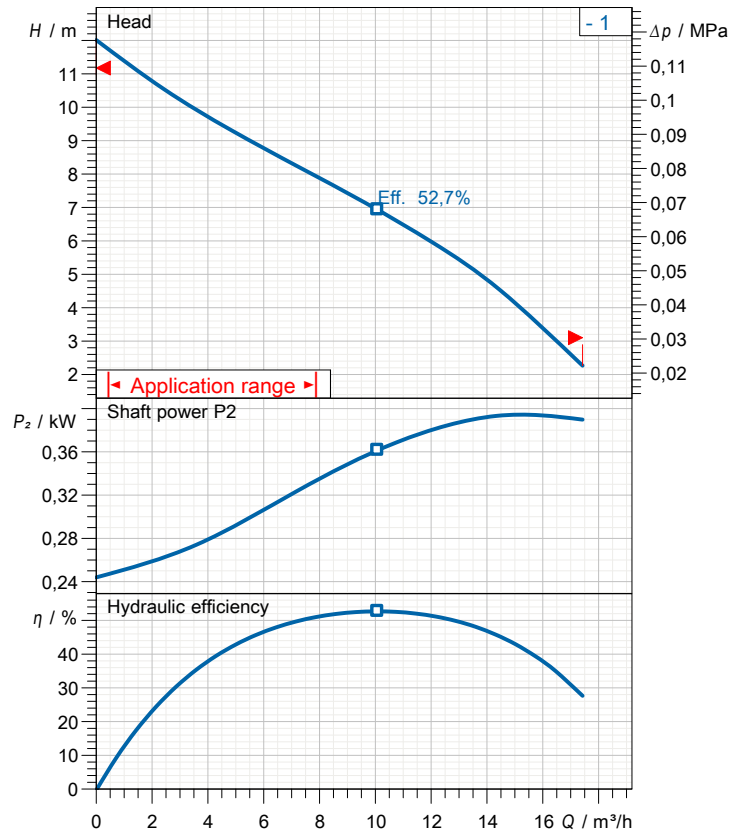


# Data sheet 50TM2.4S-53



CWL: Continuous running water level  
 LWL: Lowest running water level



## Specification

Elektrische Tauchpumpe TM-Serie  
 Degree of protection IP 68  
 Pressure resistance max. 10 m  
 Type of impeller Vortex impeller  
 Free passage 10 mm  
 Suitable for:  
 sea water, salt water

## Electric motor

Dry-type submersible induction motor  
 Insulation class E 2Poles 2813 1/min  
 Starting mode  
 Rated voltage 230 V 50 Hz 1~  
 Power uptake 0,62 kW  
 Rated power 0,40 kW  
 Rated current 3,1 A  
 Start current

## Cable

10m H07RN-F 3Cx1mm<sup>2</sup>

## Motor Protection

Circle thermal protector  
 (snap-action bi-metal device)

## Shaft seal

Double inside mechanical seal in oil bath  
 additional lubrication by oil lifting device  
 Primary seal  
 Silicon carbide on ceramic  
 Secondary seal  
 Ceramic on carbon

## Bearings

Shielded ball bearings, maintenance-free

## Materials

|             |          |
|-------------|----------|
| Impeller    | PPO-GF20 |
| Pump casing | ABS-GF20 |
| Motor Frame | Titanium |
| Shaft       | Titanium |

## Discharge size

50mm screwed-in mating flange

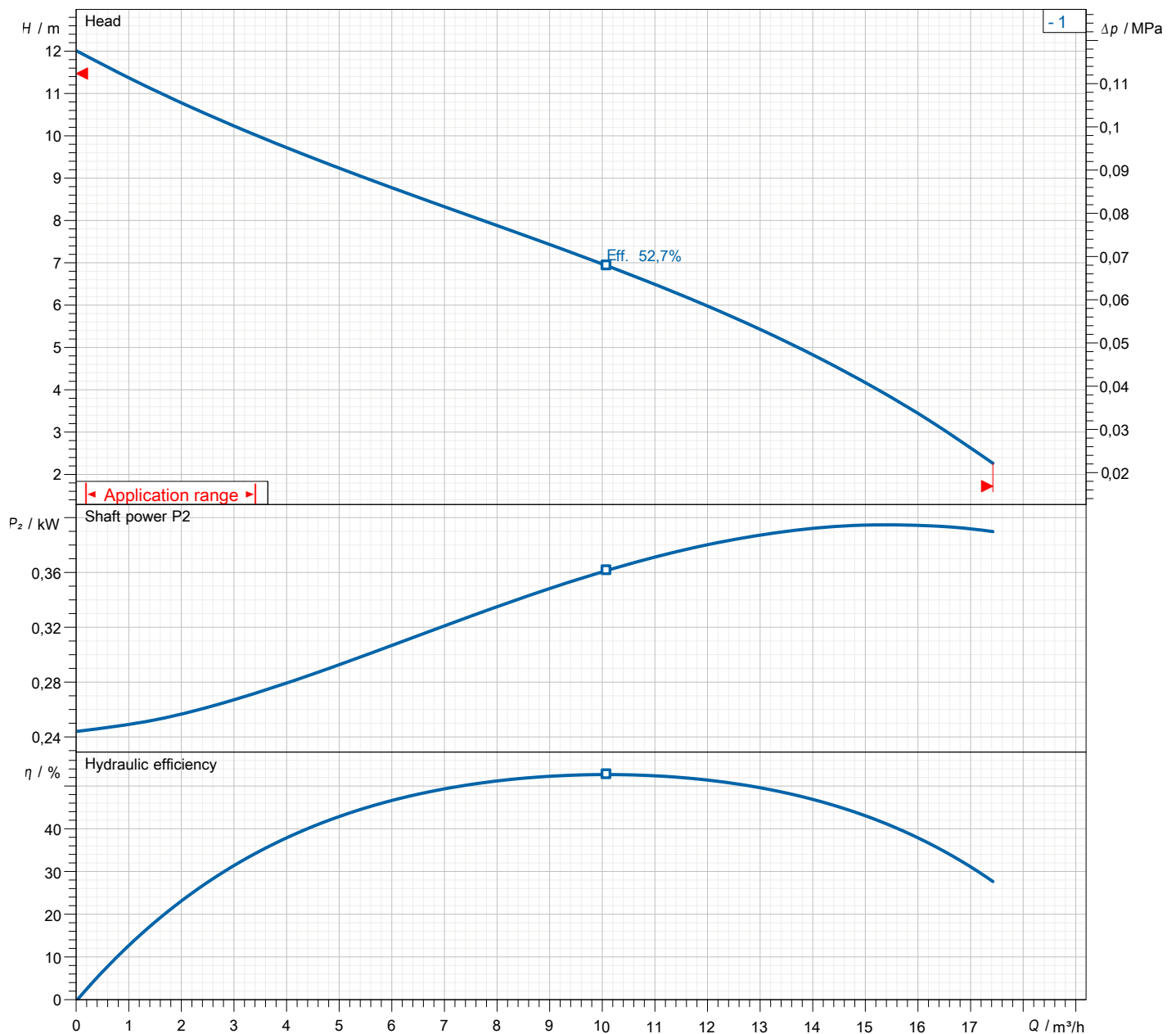
## Weight

6,7 kg (dry weight of the pump only without cable)

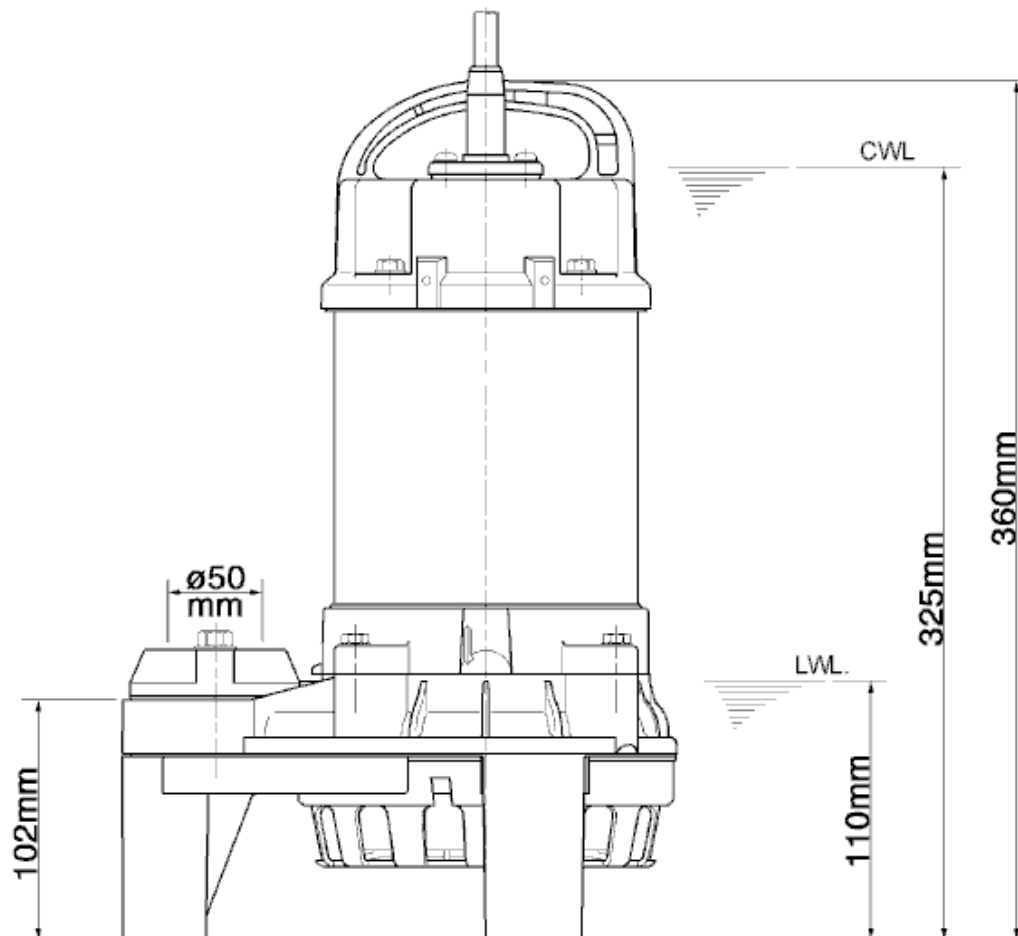
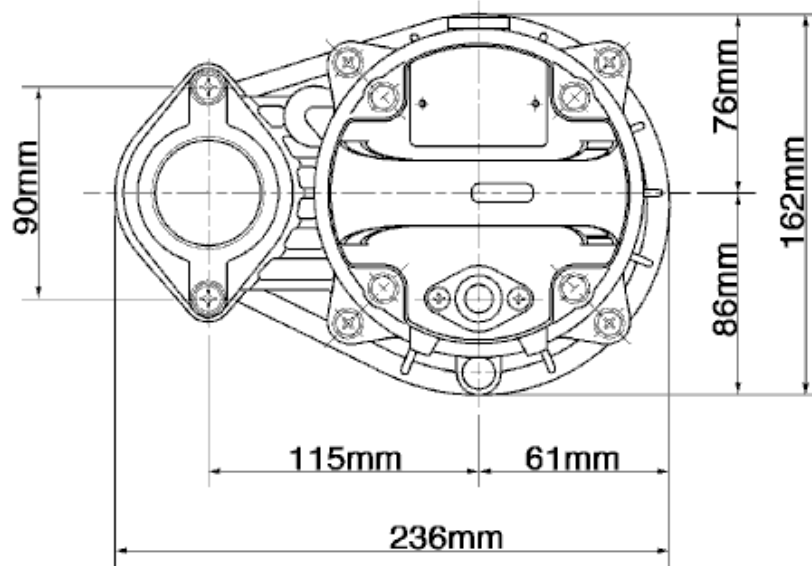
# Performance curve

## 50TM2.4S-53

|                  |            |
|------------------|------------|
| Discharge port   | 2"         |
| FördH            | 12,0 m     |
| Flow             | 17,4 m³/h  |
| Rated power      | 0,40 kW    |
| Power input      | 0,62 kW    |
| Phases           | 1~         |
| Voltages         | 230 V      |
| Frequency        | 50 Hz      |
| Rated current    | 3,1 A      |
| Starting current |            |
| Number of poles  | 2          |
| Speed            | 2813 1/min |
| Starting mode    |            |
| Insulation class | E          |



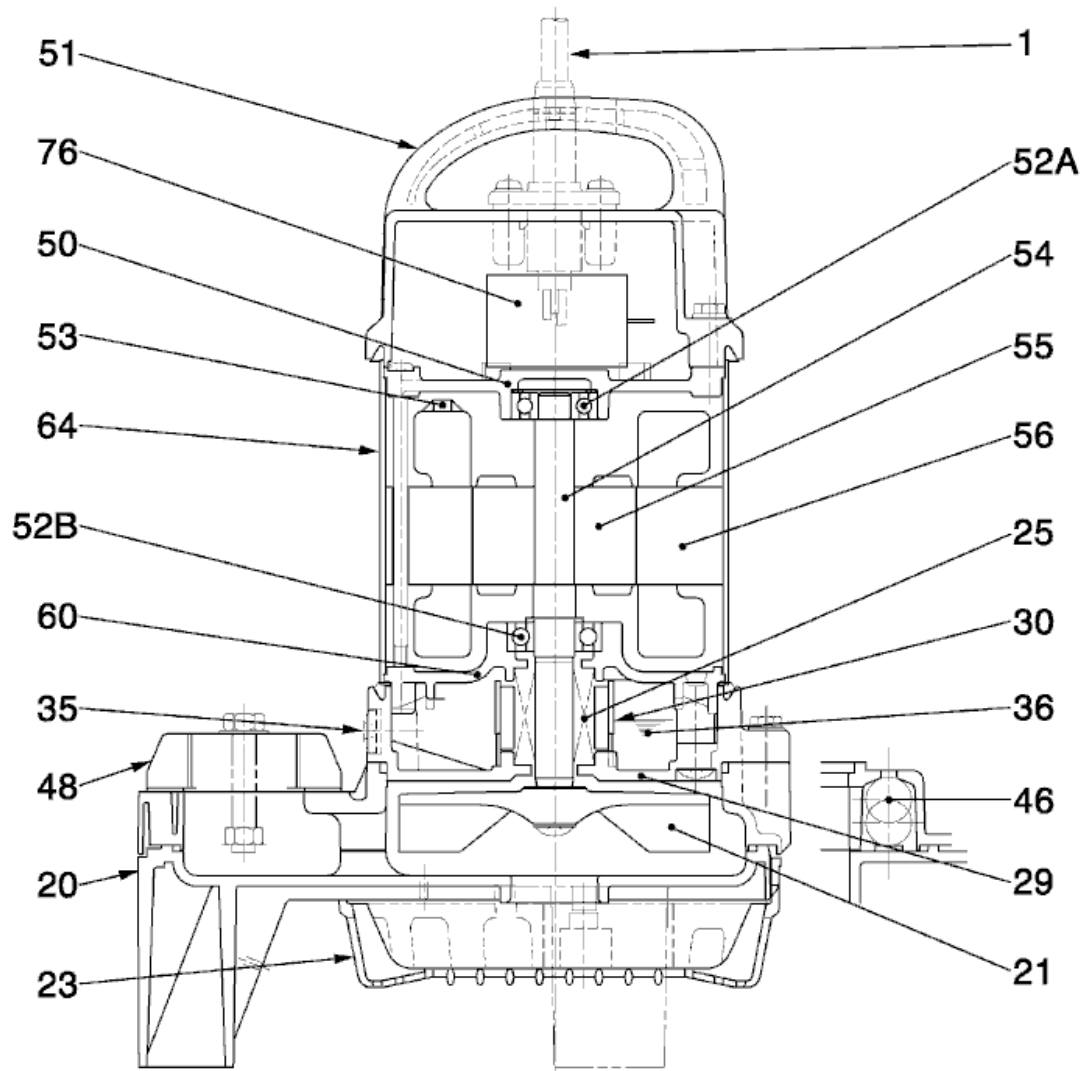
## Dimensions



**50TM2.4S-53**

**CWL: Continuous running water level**  
**LWL: Lowest running water level**

# Sectional drawing 50TM2.4S-53



**50TM2.4S-53**

| No. | Description  | Remark                      | No. | Description     | Remark                      |
|-----|--|-----------------------------|-----|-----------------|-----------------------------|
| 1   | Cable  | H07RN-F                     | 54  | Shaft           | Titanium                    |
| 20  | Pump casing  | ABS-GF20                    | 55  | Rotor           | .                           |
| 21  | Impeller   | PPO-GF20                    | 56  | Stator          | .                           |
| 23  | Strainer   | ABS                         | 60  | Bearing Housing | ADC12 Aluminium die casting |
| 25  | Mechanical seal                                      | W-14HL                      | 64  | Motor Frame     | Titanium                    |
| 29  | Oil casing   | PPS-GF40                    | 76  | Condenser       | .                           |
| 30  | Oil distributor                                      | Plastic                     |     |                 |                             |
| 35  | Oil screw  | Titanium                    |     |                 |                             |
| 36  | Lubricant  | white oil (ISO VG32)        |     |                 |                             |
| 46  | Air vent valve                                       | Glass bead                  |     |                 |                             |
| 48  | Screwed Flange                                       | Polycarbonate               |     |                 |                             |
| 50  | Motor cover  | ADC12 Aluminium die casting |     |                 |                             |
| 51  | Main cover   | PPO+PPS -GF40               |     |                 |                             |
| 52A | Upper bearing  | 6201ZZC3                    |     |                 |                             |
| 52B | Lower bearing  | 6302ZZC3                    |     |                 |                             |
| 53  | Motor Protector 380/400/415V-50Hz KA314-HRXL00 (H.C) |                             |     |                 |                             |