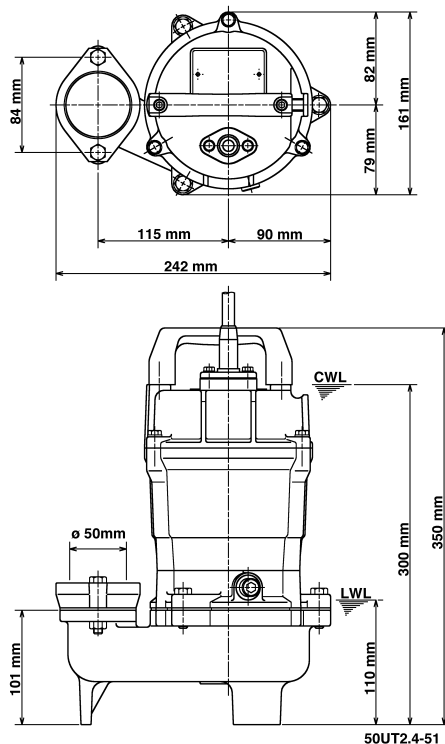
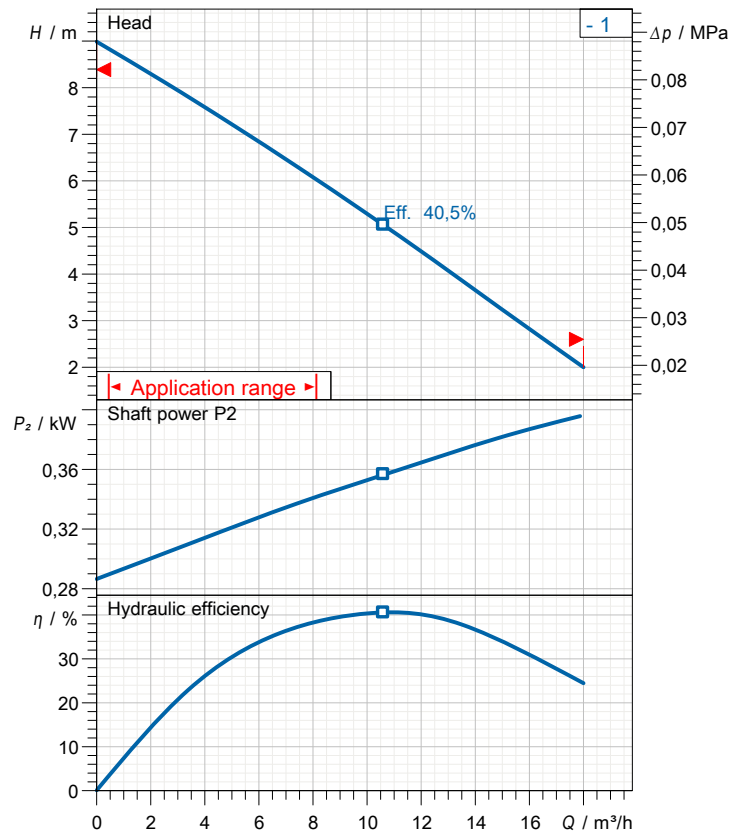


Data sheet 50UT2.4-51



CWL: Continuous running water level
 LWL: Lowest running water level



Specification

Elektrische Tauchpumpe UT-Serie

Degree of protection IP 68

Pressure resistance max. 10 m

Type of impeller Vortex impeller

Free passage 35 mm

Suitable for:

waste water and liquid carrying

Electric motor

Dry-type submersible induction motor

Insulation class E 2Poles 2816 1/min

Starting mode Direct starting

Rated voltage 400 V 50 Hz 3~

Power uptake 0,70 kW

Rated power 0,40 kW

Rated current 1,2 A

Start current 4,8 A

Cable

10m H07RN-F 4Cx1,5mm²

Motor Protection

Circle thermal protector

(snap-action bi-metal device)

Shaft seal

Double inside mechanical seal in oil bath
 additional lubrication by oil lifting device

Primary seal

Silicon carbide on ceramic

Secondary seal

Ceramic on carbon

Bearings

Shielded ball bearings, maintenance-free

Materials

Impeller PPO-GF20

Pump casing FC200 (EN-GJL-200)

Motor Frame FC200 (EN-GJL-200)

Shaft SUS403 (EN-X6Cr13)

Discharge size

2" (50mm) screwed-in mating flange

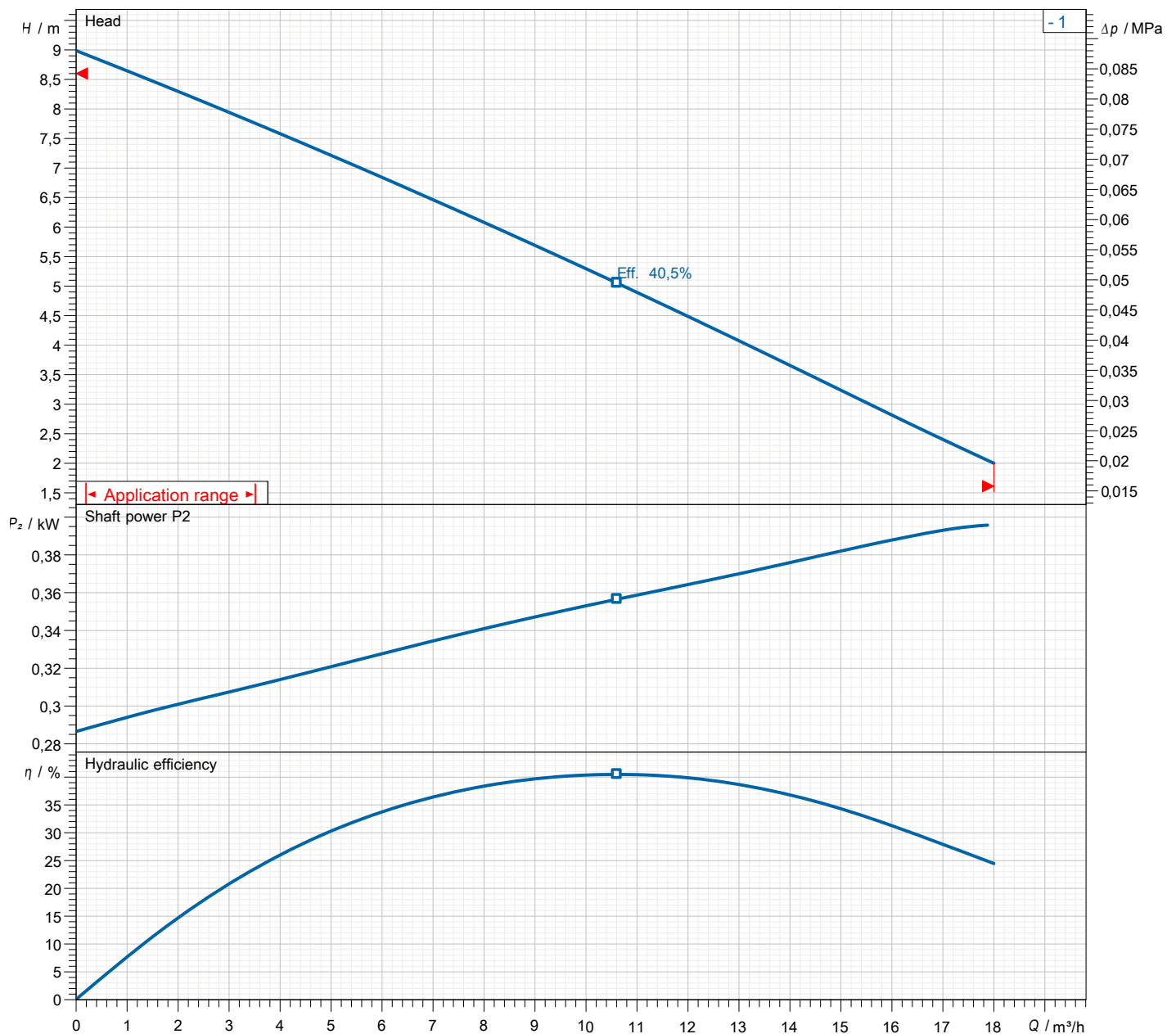
Weight

13,5 kg (dry weight of the pump only without cable)

Performance curve

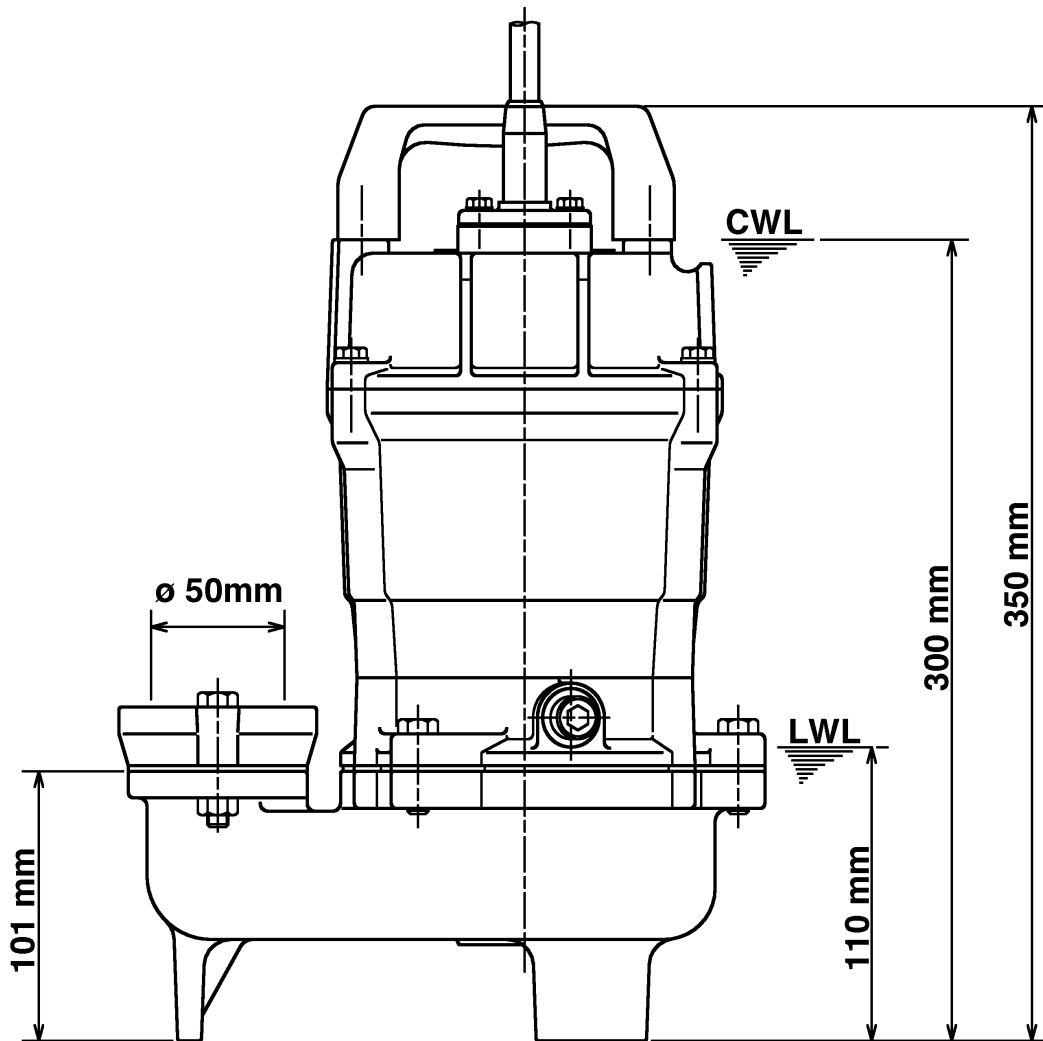
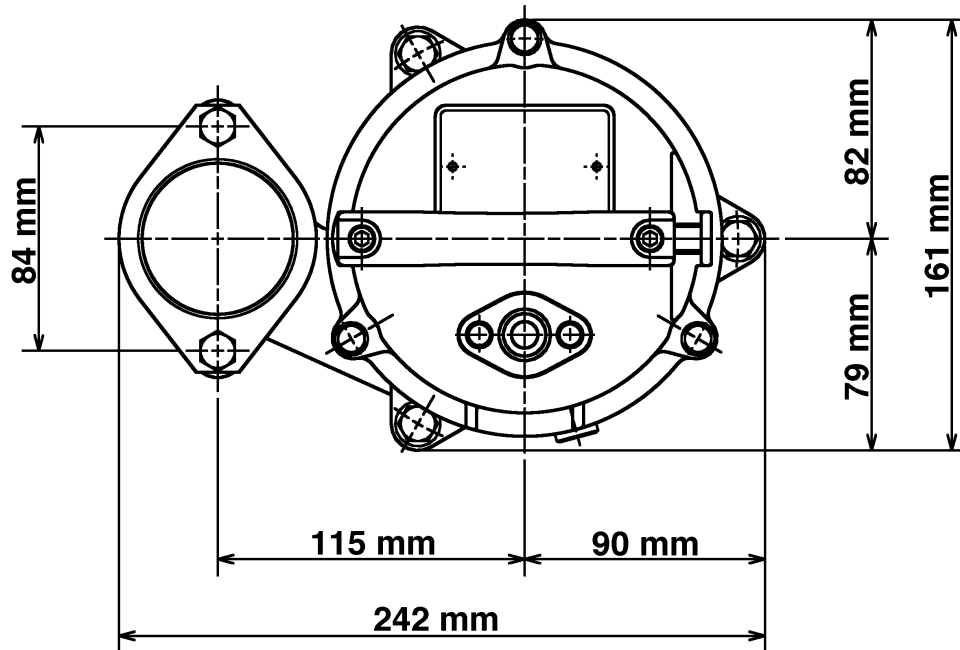
50UT2.4-51

Discharge port	2"
FördH	9,0 m
Flow	18,0 m³/h
Rated power	0,40 kW
Power input	0,70 kW
Phases	3~
Voltages	400 V
Frequency	50 Hz
Rated current	1,2 A
Starting current	4,75 A
Number of poles	2
Speed	2816 1/min
Starting mode	Direct starting
Insulation class	E



Dimensions

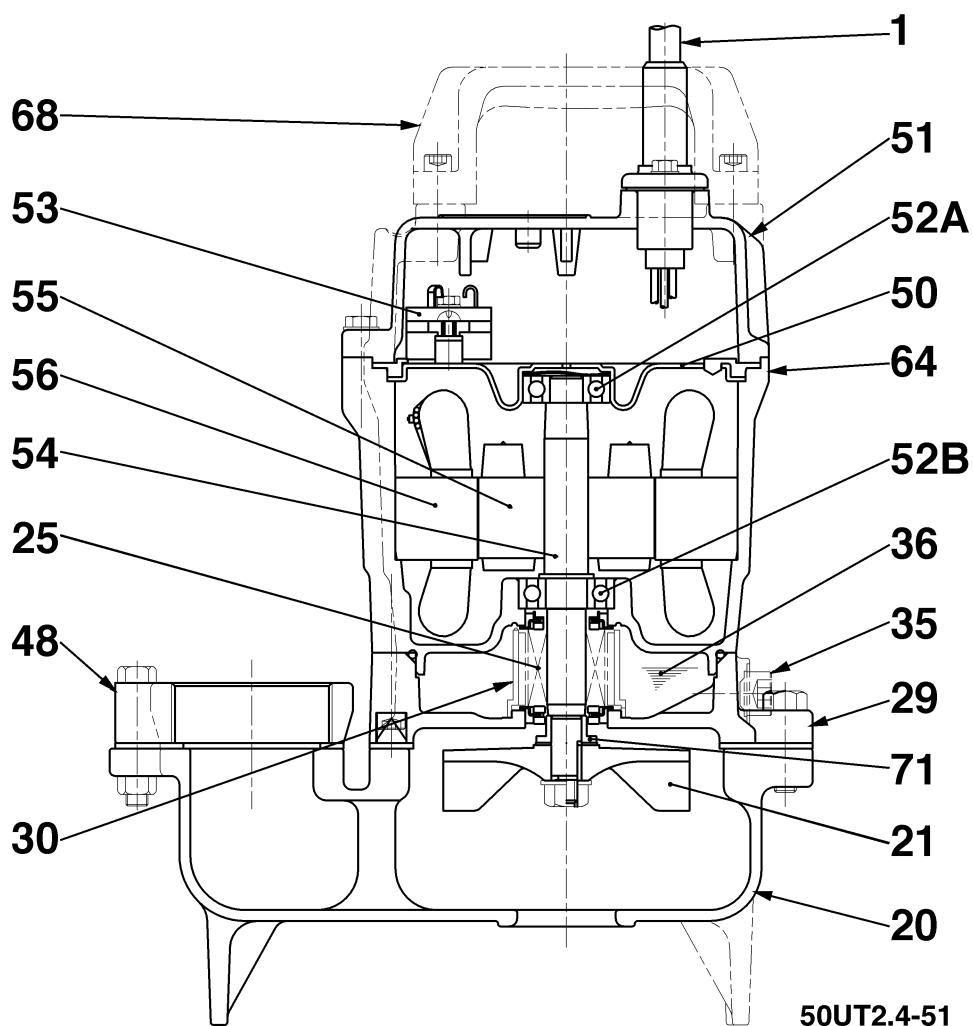
50UT2.4-51



50UT2.4-51

CWL: Continuous running water level
LWL: Lowest running water level

Sectional drawing 50UT2.4-51



No.	Description	Remark	No.	Description	Remark
1	Cable	H07RN-F	56	Stator	.
20	Pump casing	FC200 (EN-GJL-200)	64	Motor Frame	FC200 (EN-GJL-200)
21	Impeller	PPO-GF20	68	Handle	Synthetic resin
25	Mechanical seal	W-14VL	71	Shaft protection sleeve	SUS304 (EN-X5CrNi18-10)
29	Oil casing	FC200 (EN-GJL-200)			
30	Oil distributor	Plastic			
35	Oil screw	SUS304 (EN-X5CrNi18-10)			
36	Lubricant	Turbine oil (ISO VG32)			
48	Screwed Flange	FC200 (EN-GJL-200)			
50	Motor cover	FC200 (EN-GJL-200)			
51	Main cover	FC200 (EN-GJL-200)			
52A	Upper bearing	6201ZZC3			
52B	Lower bearing	6202ZZC3			
53	Motor Protector 380/400/415V-50Hz	KA314-HRXL00 (H.C)			
54	Shaft	SUS403 (EN-X6Cr13)			
55	Rotor	.			