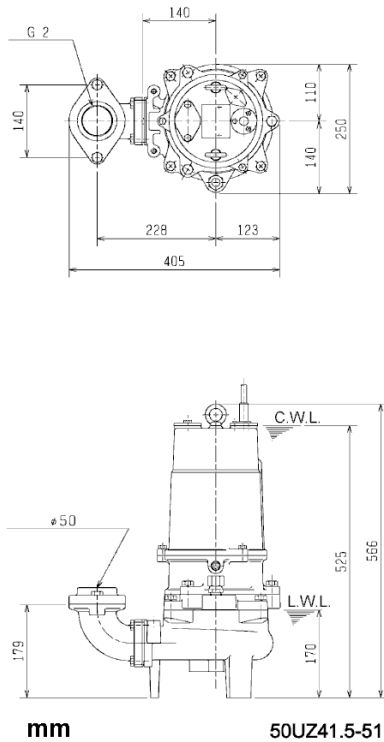
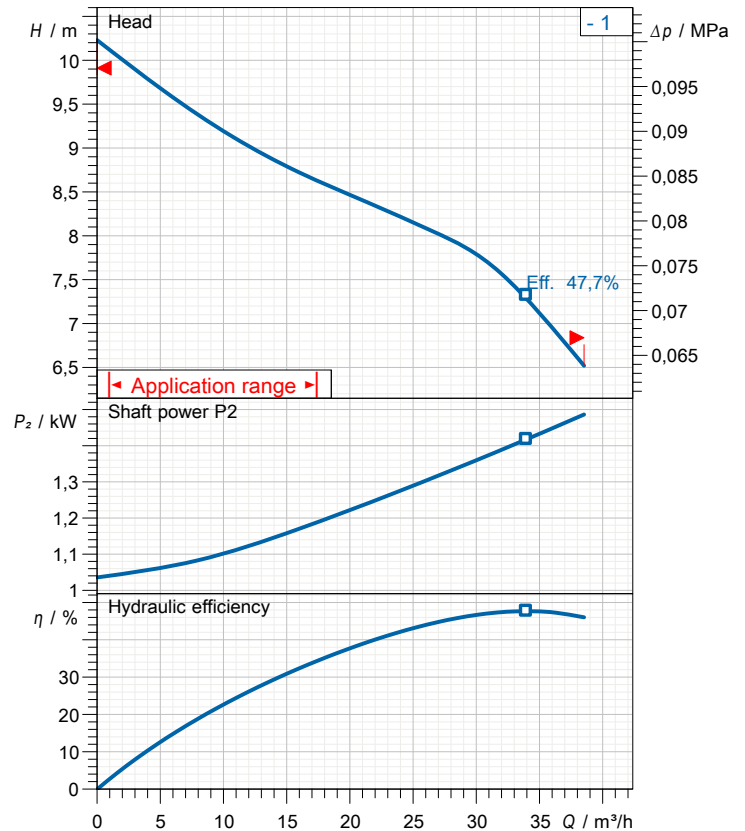


## Data sheet 50UZ41.5-51



CWL: Continuous running water level  
 LWL: Lowest running water level



## Specification

Elektrische Tauchpumpe UZ-Serie  
 Degree of protection IP 68  
 Pressure resistance max. 15 m  
 Type of impeller Vortex impeller  
 Free passage 50 mm  
 Suitable for:  
 waste water and liquid carrying

## Electric motor

Dry-type submersible induction motor  
 Insulation class E 4Poles 1420 1/min  
 Starting mode Direct starting  
 Rated voltage 400 V 50 Hz 3~  
 Power uptake 2,03 kW  
 Rated power 1,50 kW  
 Rated current 4 A  
 Start current 32,0 A

## Cable

10m H07RN-F 4Cx1,5mm<sup>2</sup>

## Motor Protection

Circle thermal protector  
 (snap-action bi-metal device)

## Shaft seal

Double inside mechanical seal in oil bath  
 additional lubrication by oil lifting device  
 Primary seal  
 Silicon carbide on silicon carbide  
 Secondary seal  
 Silicon carbide on silicon carbide

## Bearings

Shielded ball bearings, maintenance-free

## Materials

Impeller	FC200 (EN-GJL-200)
Pump casing	FC200 (EN-GJL-200)
Motor Frame	FC150 (EN-GJL-150)
Shaft	SUS420J2 (EN-X30Cr13)

## Discharge size

2" (50mm) special flange / inside thread  
 guide rail fitting optional

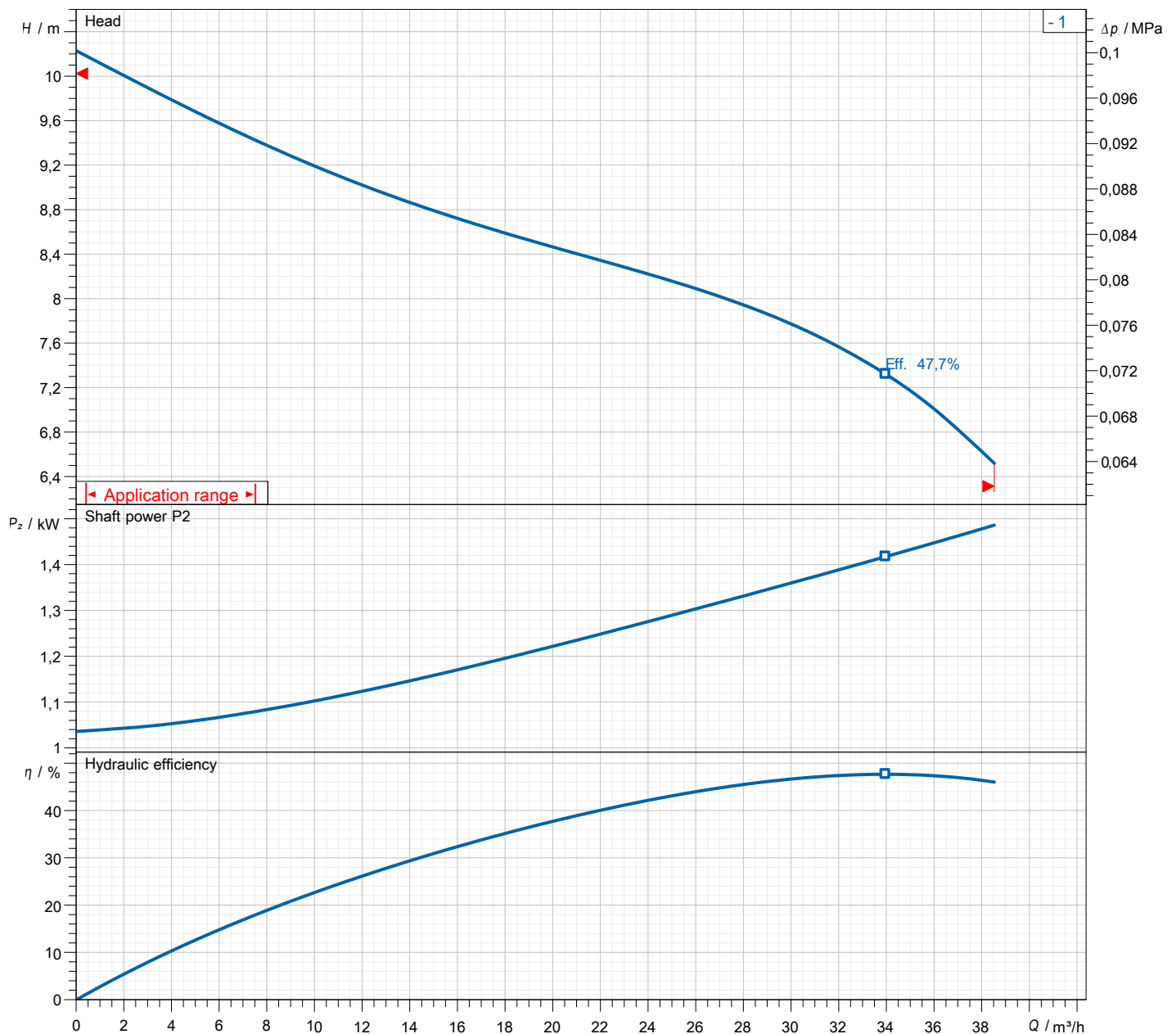
## Weight

52 kg (dry weight of the pump only without cable)

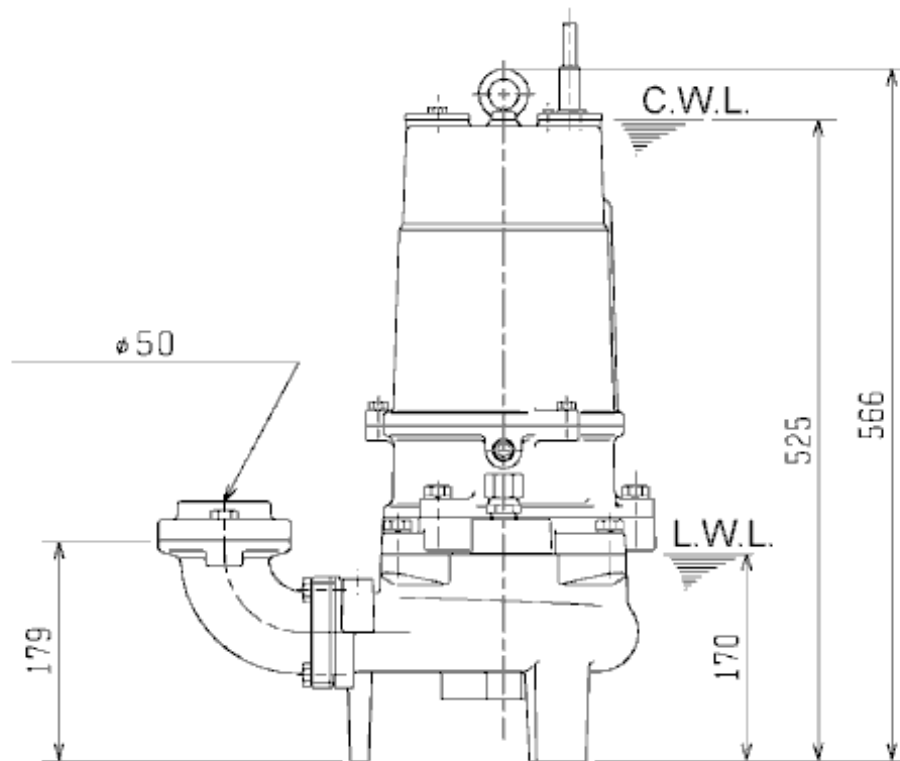
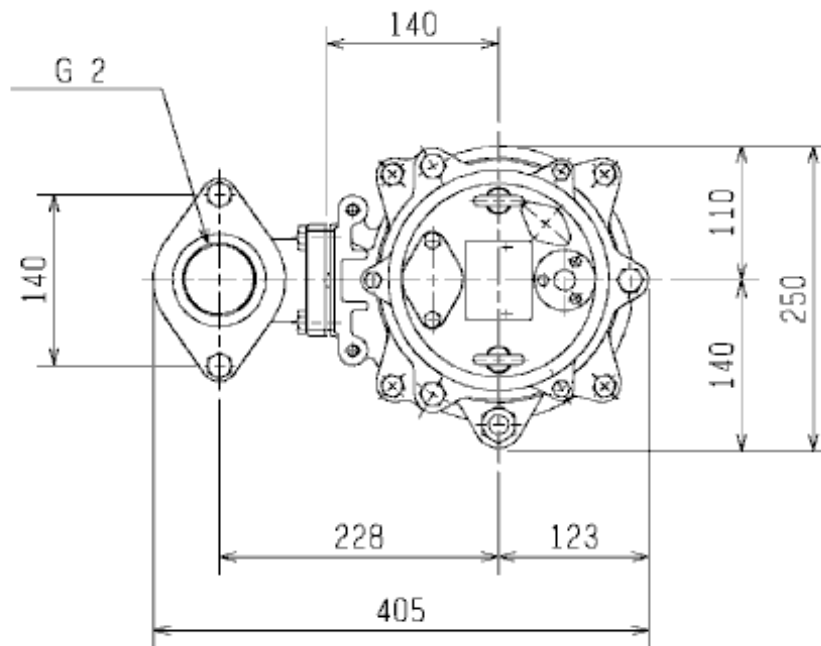
# Performance curve

## 50UZ41.5-51

Discharge port	2"
FördH	10,2 m
Flow	38,5 m³/h
Rated power	1,50 kW
Power input	2,03 kW
Phases	3~
Voltages	400 V
Frequency	50 Hz
Rated current	4 A
Starting current	32,00 A
Number of poles	4
Speed	1420 1/min
Starting mode	Direct starting
Insulation class	E



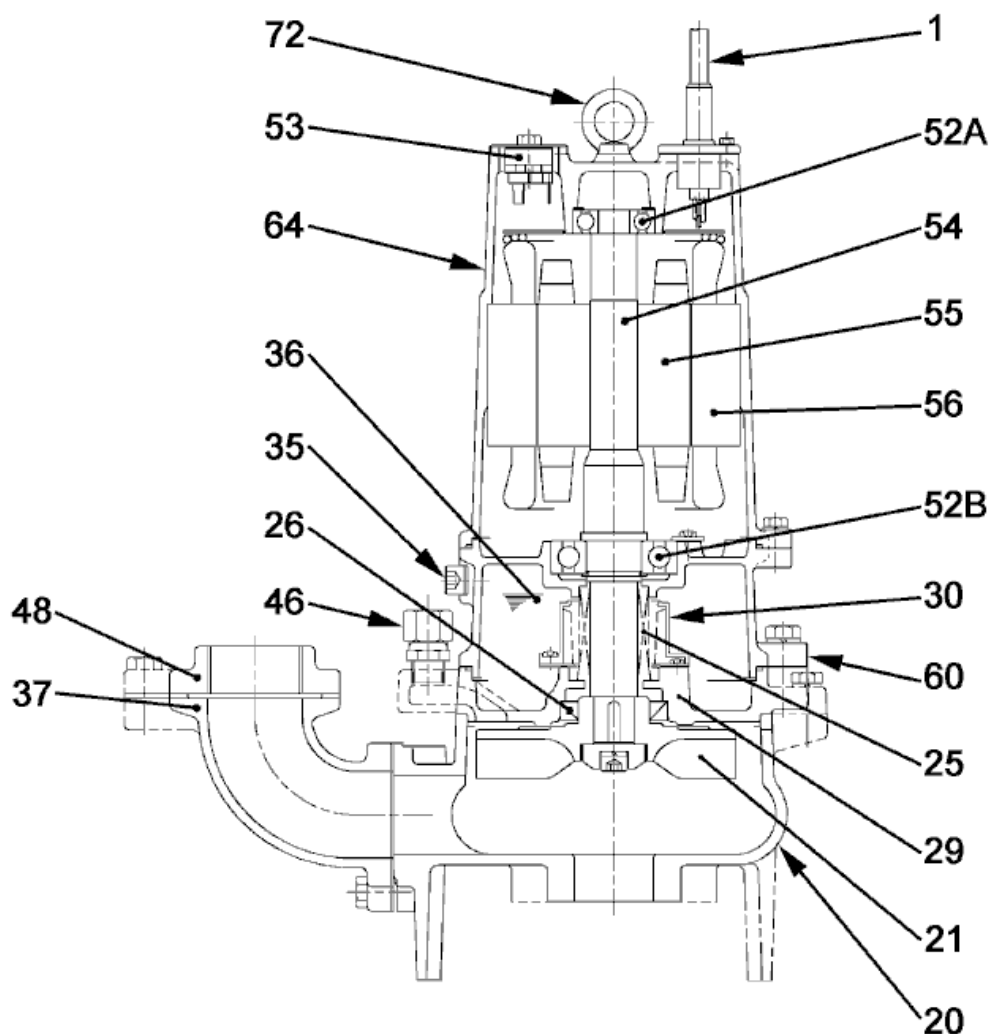
# Dimensions 50UZ41.5-51



mm

50UZ41.5-51

# Sectional drawing 50UZ41.5-51



50UZ41.5-51

No.	Description	Remark	No.	Description	Remark
1	Cable	H07RN-F	55	Rotor	.
20	Pump casing	FC200 (EN-GJL-200)	56	Stator	.
21	Impeller	FC200 (EN-GJL-200)	60	Bearing Housing	FC150 (EN-GJL-150)
25	Mechanical seal	H-30A	64	Motor Frame	FC150 (EN-GJL-150)
26	Oil seal	TC456812	72	Eye screw (2x)	SUS304 (EN-X5CrNi18-10)
29	Oil casing	FC200 (EN-GJL-200)			
30	Oil distributor	Plastic			
35	Oil screw	SUS304 (EN-X5CrNi18-10)			
36	Lubricant	Turbine oil (ISO VG32)			
37	Discharge bend	FC200 (EN-GJL-200)			
46	Air vent screw	Brass			
48	Screwed Flange	FC200 (EN-GJL-200)			
52A	Upper bearing	6304ZZC3			
52B	Lower bearing	6307ZZC3			
53	Motor Protector 380/400/415V-50Hz	KA314-HRXL00 (H.C)			
54	Shaft	SUS420J2 (EN-X30Cr13)			