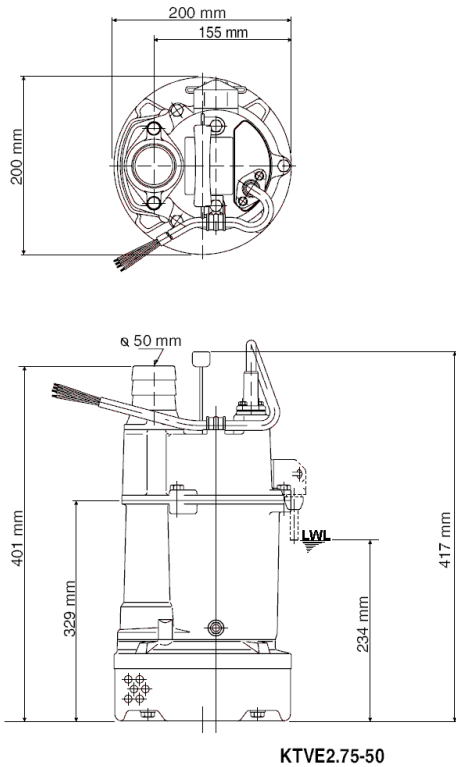
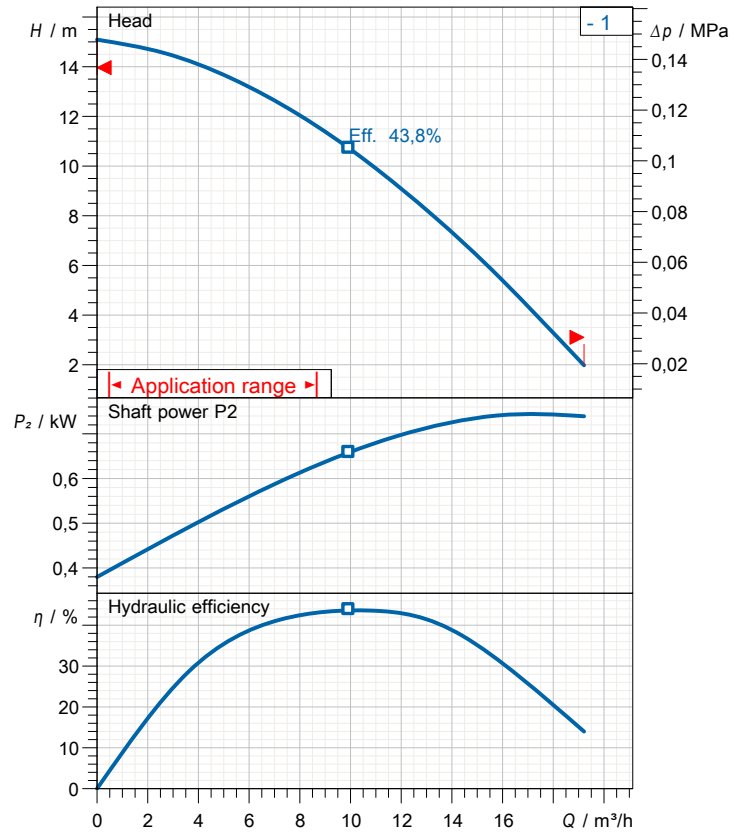


## Data sheet KTVE2.75-50



CWL: Continuous running water level



## Specification

Elektrische Tauchpumpe KTVE-Serie  
 Degree of protection IP 68  
 Pressure resistance max. 10 m  
 Type of impeller semi-vortex  
 Max. solid handling 6 mm  
 Suitable for:  
 rain water, ground water, sand water

## Electric motor

Dry-type submersible induction motor  
 Insulation class E 2Poles 2780 1/min  
 Starting mode Direct starting  
 Rated voltage 400 V 50 Hz 3~  
 Power uptake 1,16 kW  
 Rated power 0,75 kW  
 Rated current 1,8 A  
 Start current 9,0 A

## Cable

10m NSSHÖU 4Cx1,5mm<sup>2</sup>

## Motor Protection

Circle thermal protector  
 (snap-action bi-metal device)

## Shaft seal

Double inside mechanical seal in oil bath  
 additional lubrication by oil lifting device  
 Primary seal  
 Silicon carbide on silicon carbide  
 Secondary seal  
 Carbon on ceramic

## Bearings

Shielded ball bearings, maintenance-free

## Materials

Impeller	Urethane rubber
Pump casing	Butadiene-/nitrile-rubber
Motor Frame	Aluminium alloy casting
Shaft	SUS420J2 (EN-X30Cr13)

## Discharge size

2" (50mm) BS-Coupling (threaded flange)

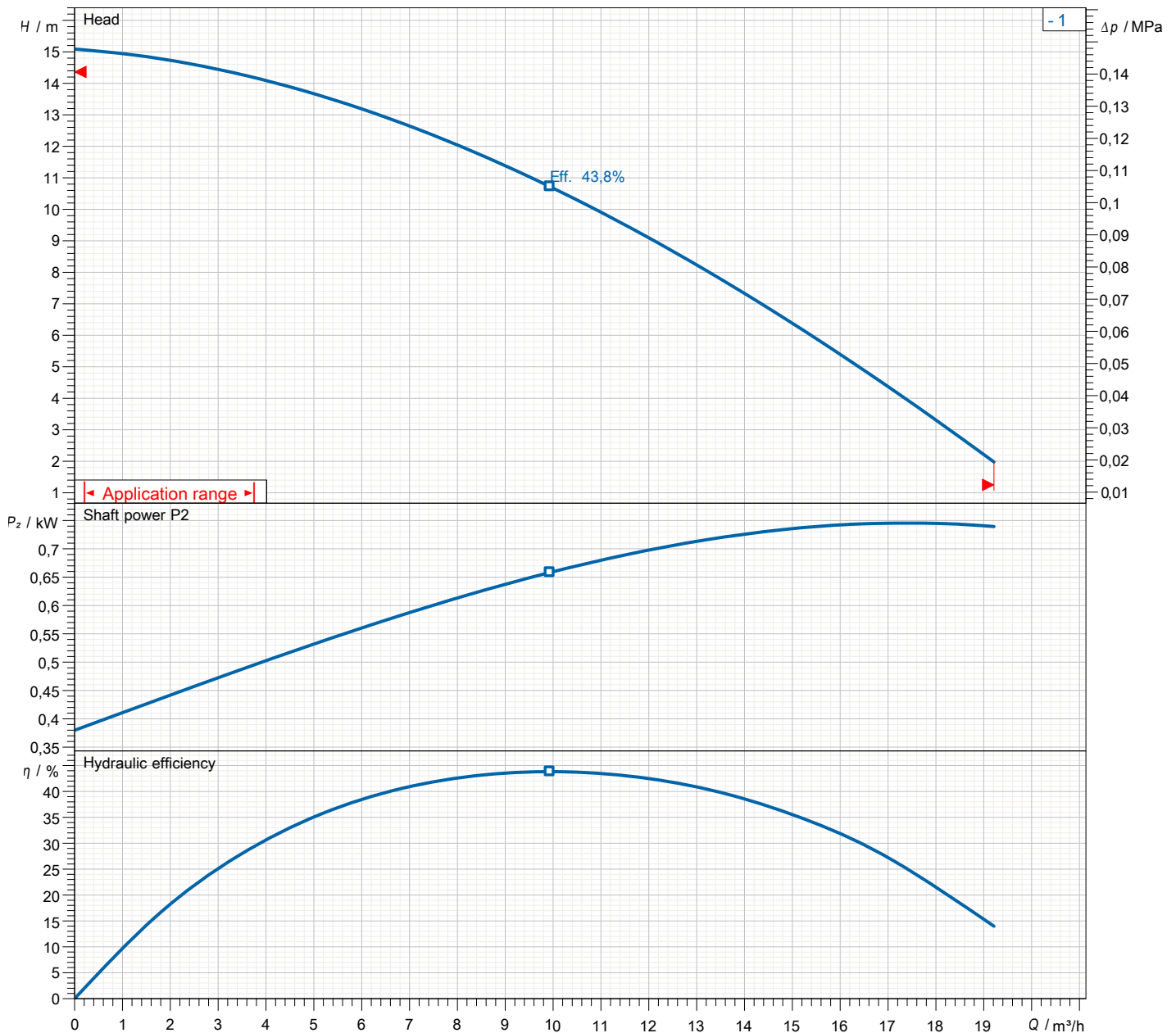
## Weight

12,7 kg (dry weight of the pump only without cable)

# Performance curve

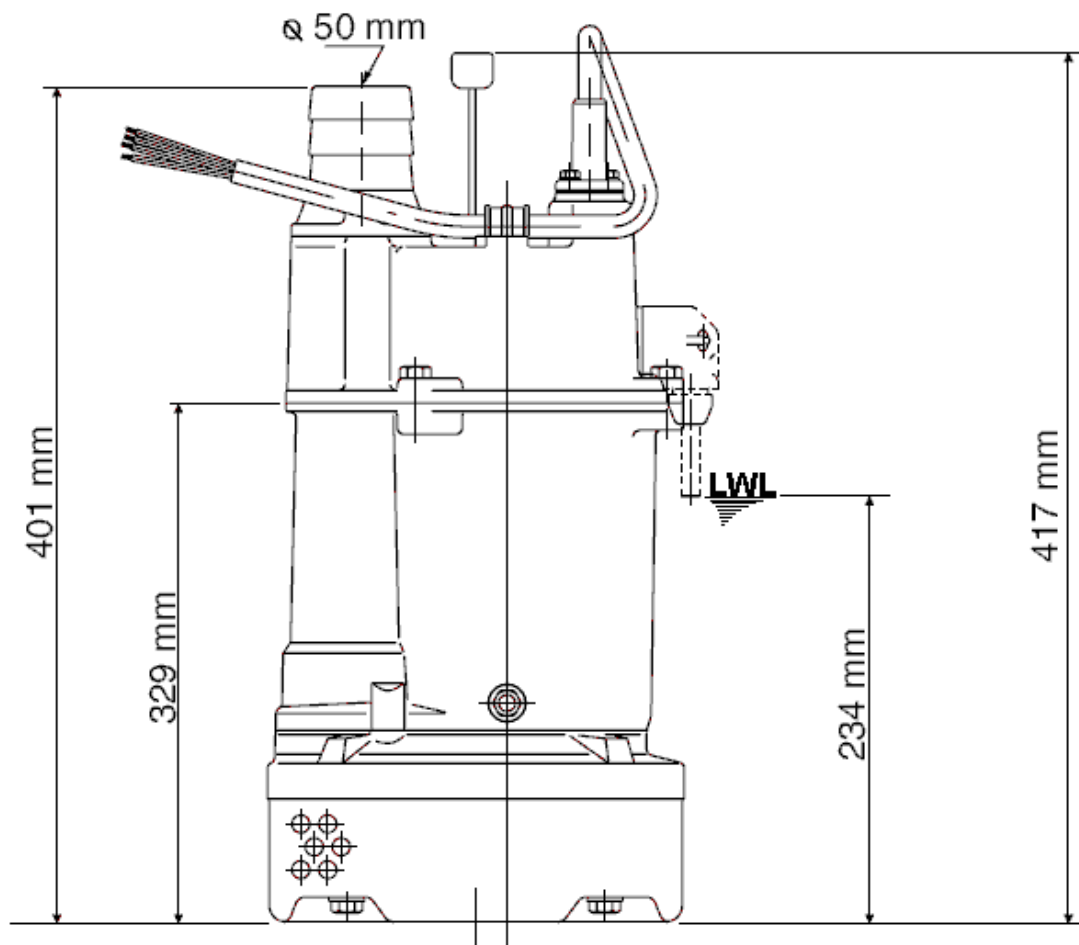
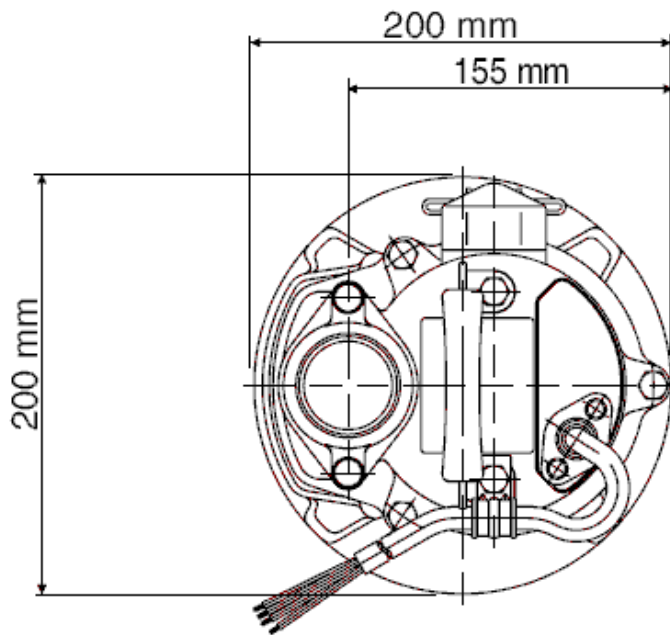
## KTVE2.75-50

Discharge port	2"
FördH	15,1 m
Flow	19,2 m³/h
Rated power	0,75 kW
Power input	1,16 kW
Phases	3~
Voltages	400 V
Frequency	50 Hz
Rated current	1,8 A
Starting current	9,00 A
Number of poles	2
Speed	2780 1/min
Starting mode	Direct starting
Insulation class	E



# Dimensions

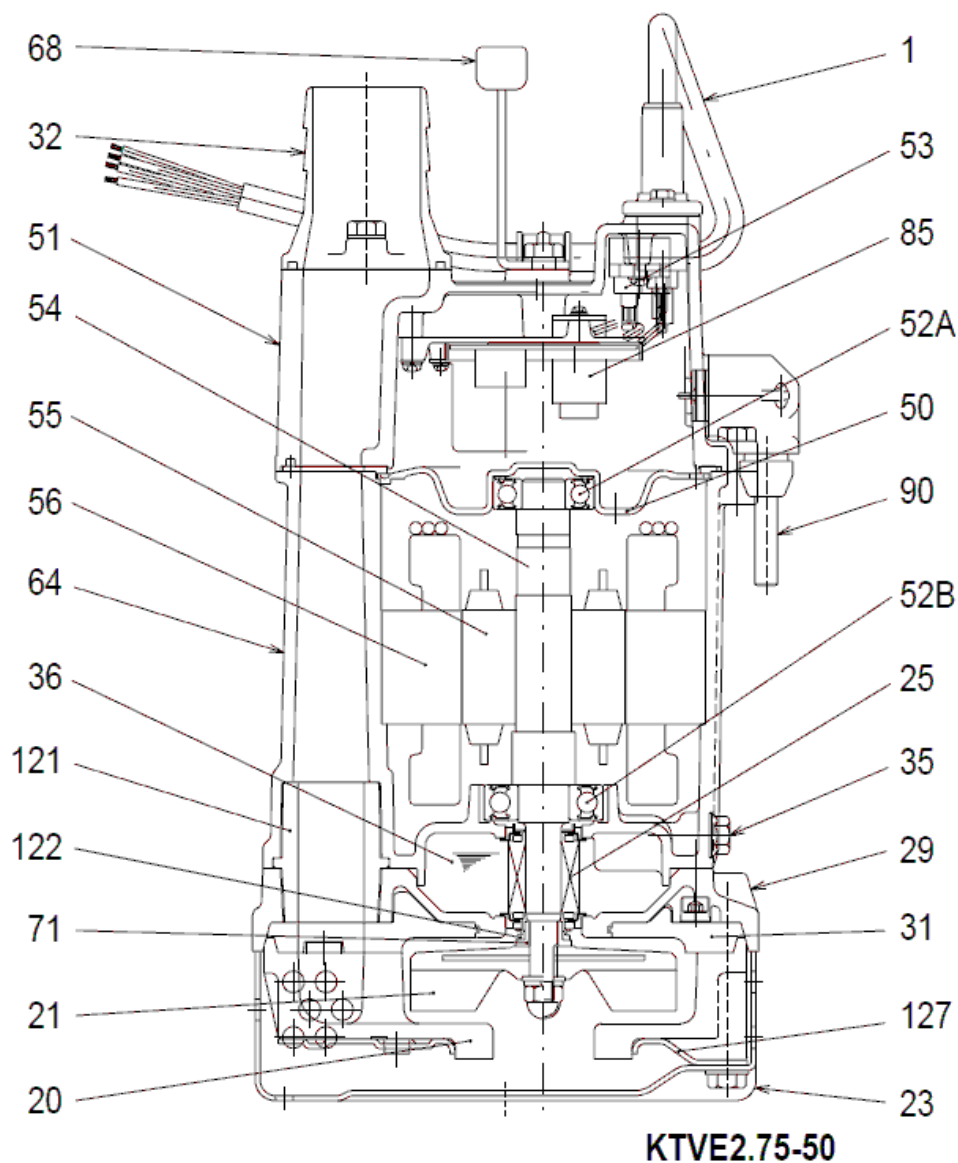
## KTVE2.75-50



**KTVE2.75-50**

CWL: Continuous running water level  
LWL: Lowest running water level

# Sectional drawing KTVE2.75-50



No.	Description	Remark	No.	Description	Remark
1	Cable	20m NSSHÖU	55	Rotor	.
20	Pump casing	Butadiene-/nitrile-rubber	56	Stator	.
21	Impeller	Urethane rubber	64	Motor Frame	Aluminium alloy casting
23	Strainer	Steel plate	68	Handle	Steelplate + butadieneacrylnitrilerubber
25	Mechanical seal	W-14VL	71	Shaft protection sleeve	SUS304 (EN-X5CrNi18-10)
29	Oil casing	Aluminium alloy casting	85	Relais	.
31	Attrition plate	Butadiene-/nitrile-rubber	90	Electrode	.
32	Discharge coupling	Aluminium alloy casting	121	Wear protection	Styrene-butadiene-rubber
35	Oil screw	SUS304 (EN-X5CrNi18-10)	122	V-ring	Butadieneacrylnitrilerubber
36	Lubricant	Turbine oil (ISO VG32)	127	Pressure plate	Steel plate
50	Motor cover	Steel plate			
51	Main cover	Aluminium alloy casting			
52A	Upper bearing	6203ZZC3			
52B	Lower bearing	6204ZZC3			
53	Motor Protector 380/400/415V-50Hz	KA314-HRXL00 (H.C)			
54	Shaft	SUS420J2 (EN-X30Cr13)			