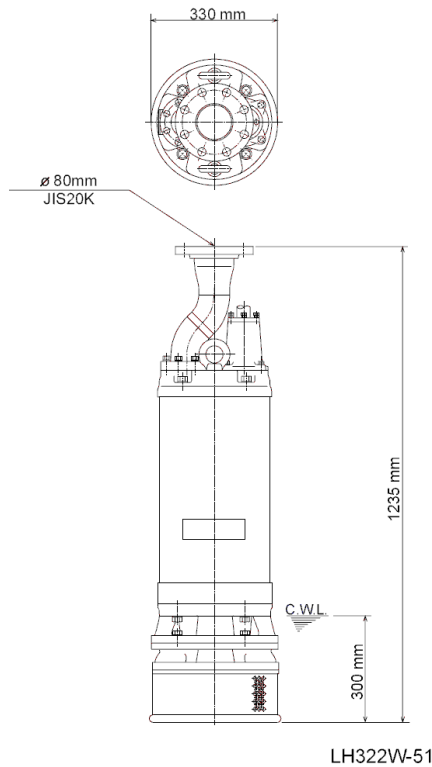
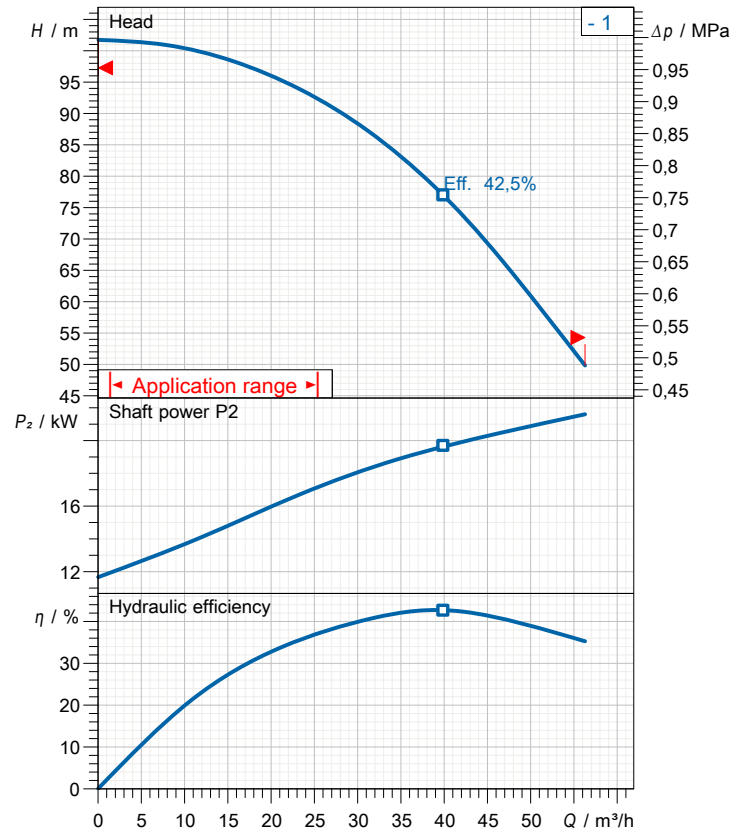


# Data sheet LH322W-51



CWL: Continuous running water level



## Specification

Elektrische Tauchpumpe LHW-Serie  
 Degree of protection IP 68  
 Pressure resistance max. 30 m  
 Type of impeller Closed  
 Max. solid handling 8,5 mm  
 Suitable for:  
 rain water, ground water, sand water

## Electric motor

Dry-type submersible induction motor  
 Insulation class B 2Poles 2910 1/min  
 Starting mode Direct starting  
 Rated voltage 400 V 50 Hz 3~  
 Power uptake 26,99 kW  
 Rated power 22,00 kW  
 Rated current 39 A  
 Start current 290,2 A

## Cable

20m NSSHÖU 4Cx10mm²

## Motor Protection

Circle thermal protector  
 (snap-action bi-metal device)

## Shaft seal

Double inside mechanical seal in oil bath  
 additional lubrication by oil lifting device  
 Primary seal  
 Silicon carbide on silicon carbide  
 Secondary seal  
 Silicon carbide on carbon

## Bearings

Shielded ball bearings, maintenance-free

## Materials

Impeller (2x)	Chromium Iron HiCrFC
Upper Pump casing	FC200 (EN-GJL-200)
Middle Pump casing	FC200 (EN-GJL-200)
Motor Frame	FC200 (EN-GJL-200)
Shaft	SUS420J2 (EN-X30Cr13)

## Discharge size

80mm JIS20K flange

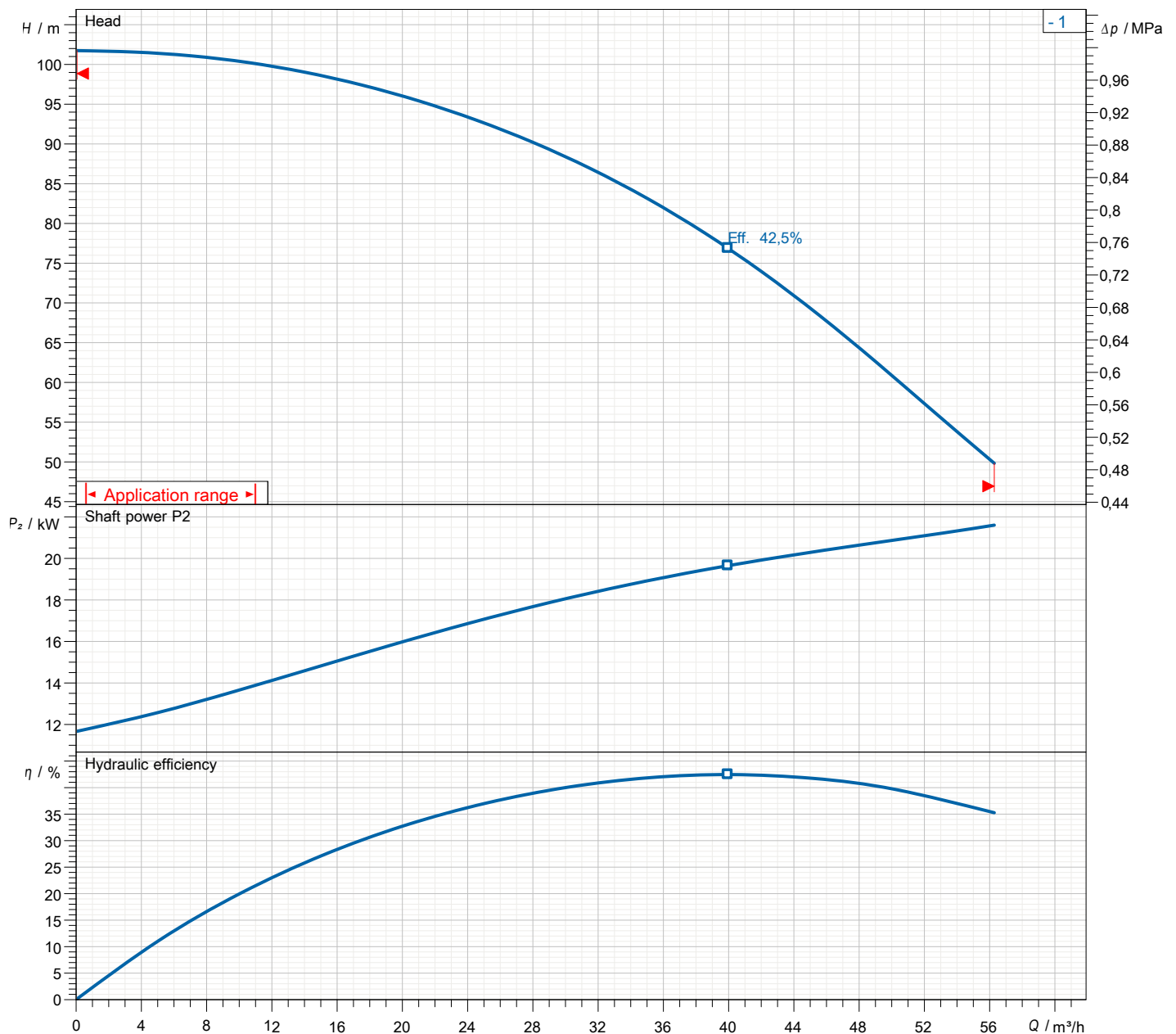
## Weight

304 kg (dry weight of the pump only without cable)

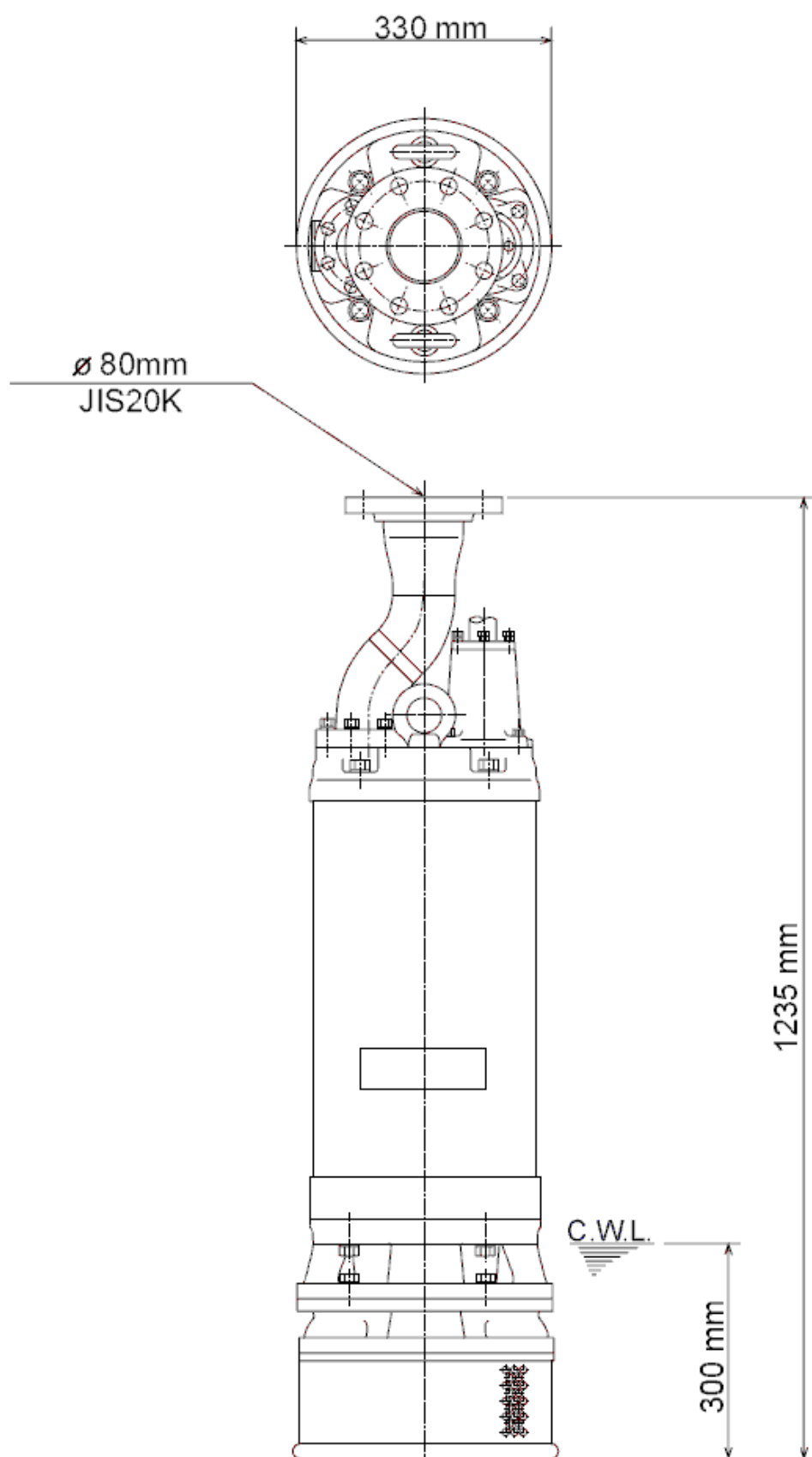
# Performance curve

## LH322W-51

Discharge port	3"
FördH	101,7 m
Flow	56,3 m³/h
Rated power	22,00 kW
Power input	26,99 kW
Phases	3~
Voltages	400 V
Frequency	50 Hz
Rated current	39 A
Starting current	290,16 A
Number of poles	2
Speed	2910 1/min
Starting mode	Direct starting
Insulation class	B

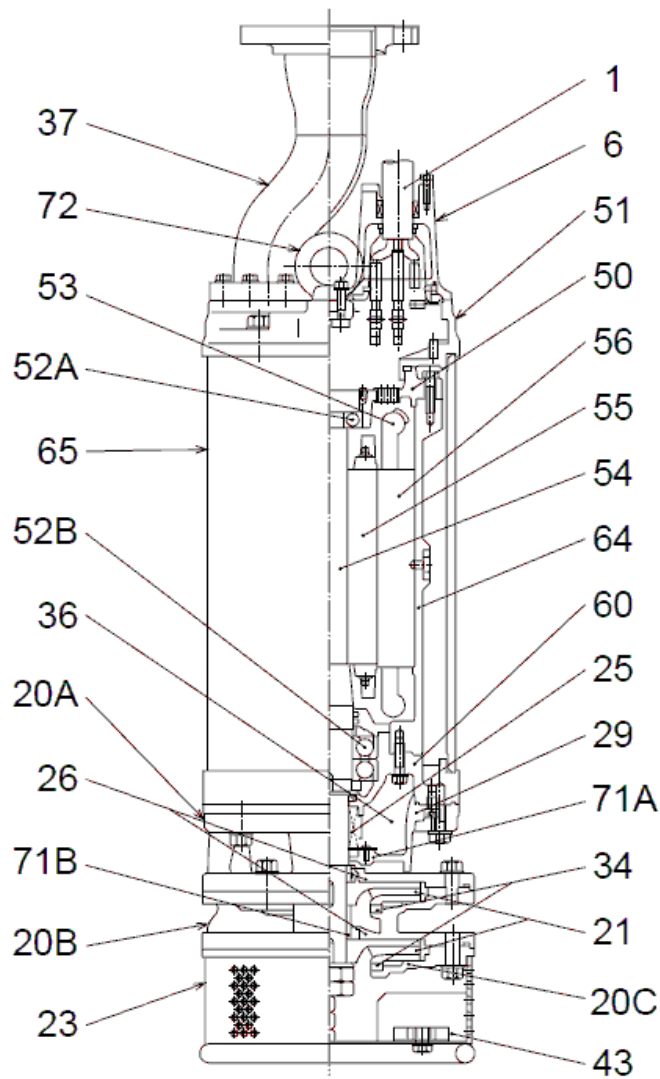


# Dimensions LH322W-51



LH322W-51

# Sectional drawing LH322W-51



LH322W-51

No.	Description	Remark	No.	Description	Remark
1	Cable	20m NSSHÖU	50	Lower motor cover	FC200 (EN-GJL-200)
6	Stuffing box	FC200 (EN-GJL-200)	51	Upper motor cover	FC200 (EN-GJL-200)
20A	Upper Pump casing	FC200 (EN-GJL-200)	52A	Upper bearing	6307ZZC3
20B	Middle Pump casing	FC200 (EN-GJL-200)	52B	Lower bearing	7311DBC3
20C	Lower Pump casing	FC200 (EN-GJL-200)	53	Motor Protector 380/400/415V-50Hz	KA314-HRXL00 (H.C)
21	Impeller (2x)	Chromium Iron HiCrFC	54	Shaft	SUS420J2 (EN-X30Cr13)
23	Strainer	Construction steel SS400	55	Rotor	.
25	Mechanical seal	HT-4550	56	Stator	.
26	Labyrinth ring (2x)	SUS304 (EN-X5CrNi18-10)	60	Bearing Housing	FC200 (EN-GJL-200)
29	Oil casing	FC200 (EN-GJL-200)	64	Motor Frame	FC200 (EN-GJL-200)
30	Oil distributor	Plastic	65	Outer Cover	Construction steel SS400
34	Wear Ring (2x)	Chromium Iron HiCrFC	71A	Upper shaft protection sleeve	SUS403 (EN-X6Cr13)
35	Oil screw (3x)	SUS304 (EN-X5CrNi18-10)	71B	Lower shaft protection sleeve	SUS403 (EN-X6Cr13)
36	Lubricant	Turbine oil (ISO VG32)	72	Eye screw (2x)	SUS304 (EN-X5CrNi18-10)
37	Discharge coupling	Steel pipe / Sectional steel SUS 10040			
43	Sacrificial anode (2x)	Aluminium alloy			