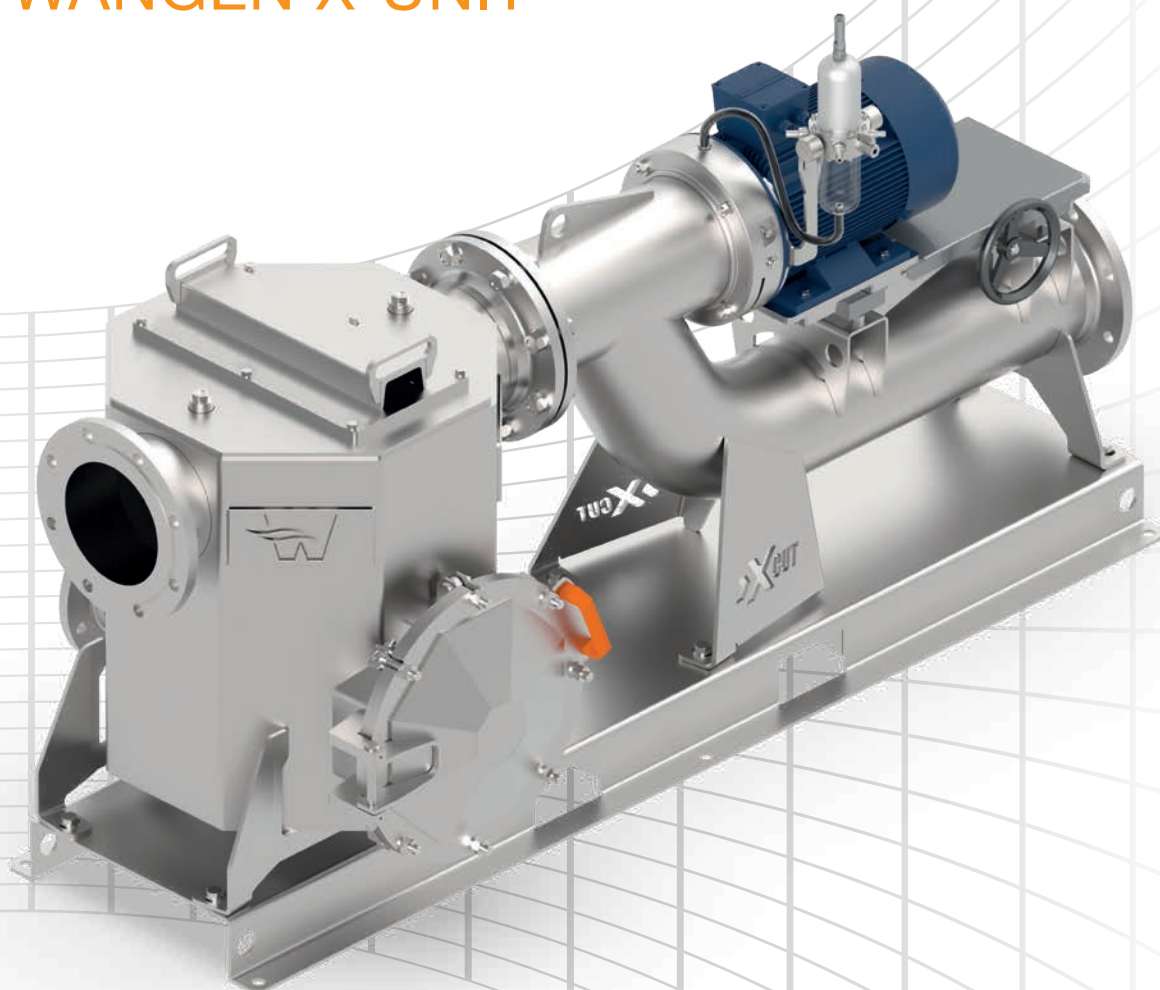


System for debris removal and substrate cutting

WANGEN X-UNIT



The **modular** system for reliable protection of plant equipment:

X-TRACT
+ X-CUT
= X-UNIT.

WANGEN X-UNIT

Complete system for debris removal and substrate cutting

The WANGEN X-UNIT is employed in every case where foreign bodies and debris from pumped media must be separated out and cutted:

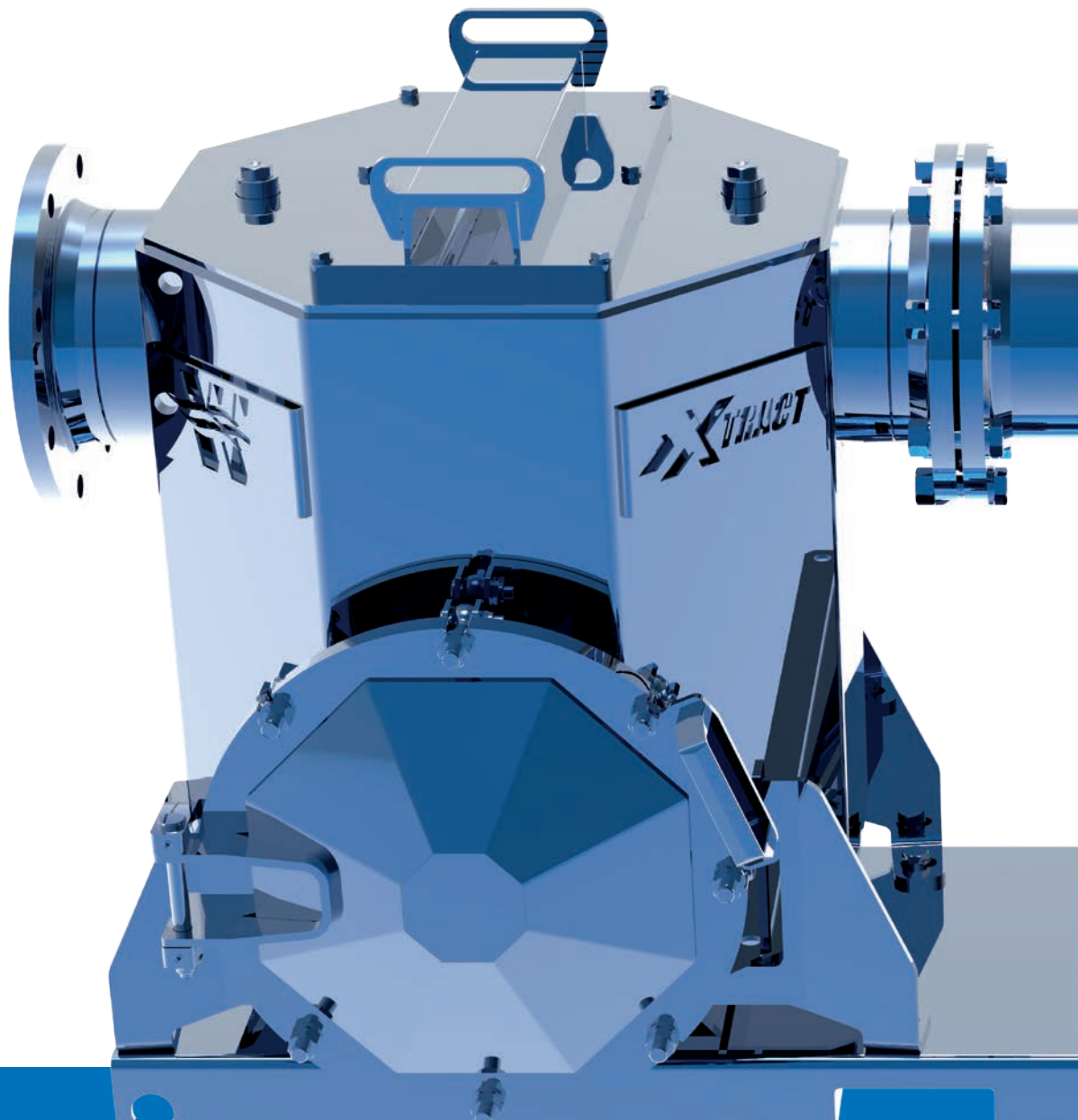
- Biogas plants
- Biowaste utilisation
- Stable application in agricultural technology
- Liquid manure technology vehicle construction
- Municipal waste water treatment plants

Modular structure

The WANGEN X-UNIT consists of the two modules X-TRACT and X-CUT. Both components are available separately and are optimally co-ordinated with each other as an X-UNIT.

Increased process safety

through removal of system-harmful foreign bodies and debris with the aid of the foreign body separator X-TRACT and the cutting unit X-CUT. Optimum adaptation of the cutting unit to the medium easily possible.



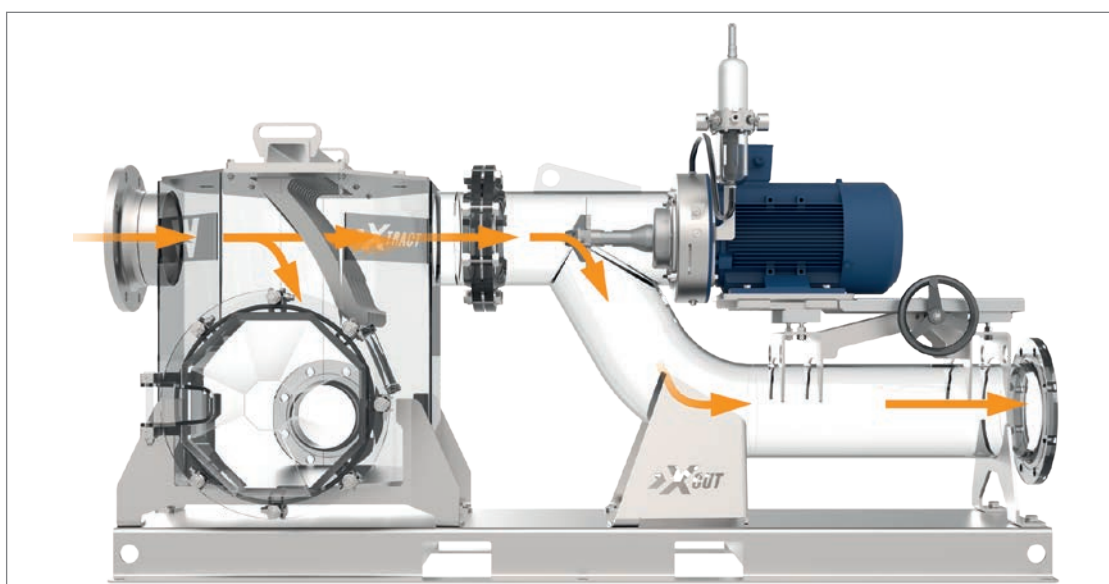
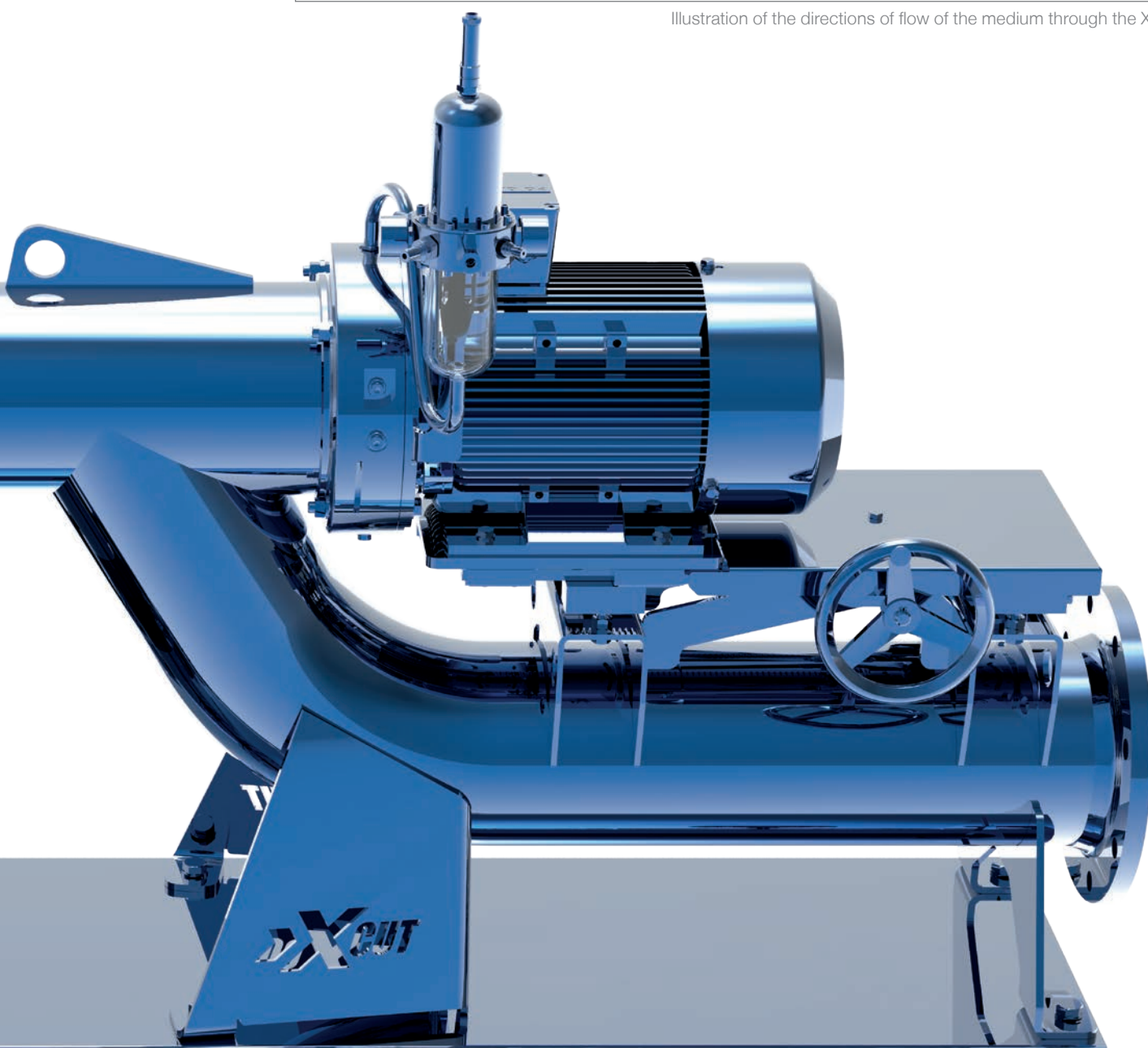


Illustration of the directions of flow of the medium through the X-UNIT



WANGEN X-TRACT

Process-optimised adaptation

to the pumped media by a simple change of the screen geometry.

Easy removal of the foreign bodies

through large openings.

Problem-free integration into existing systems

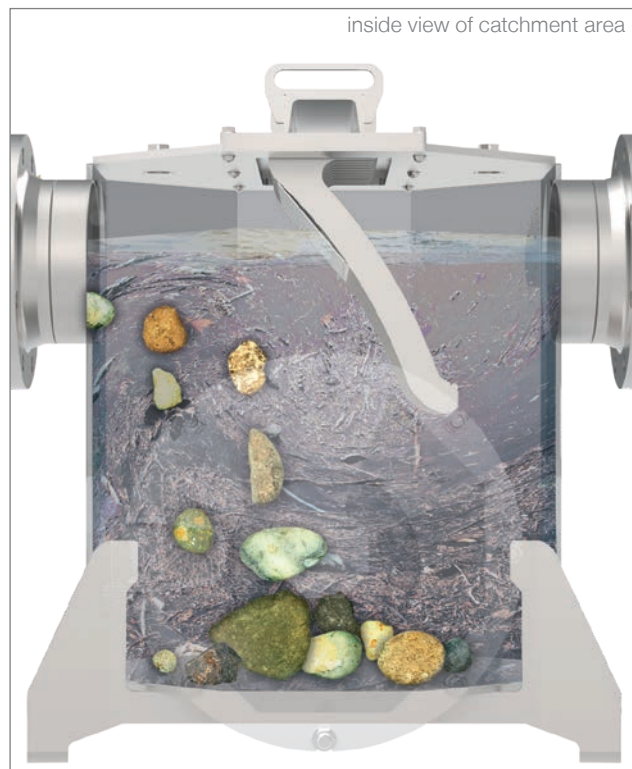
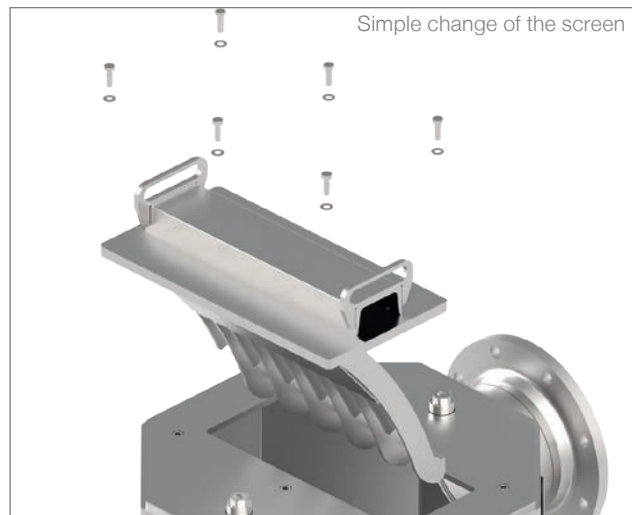
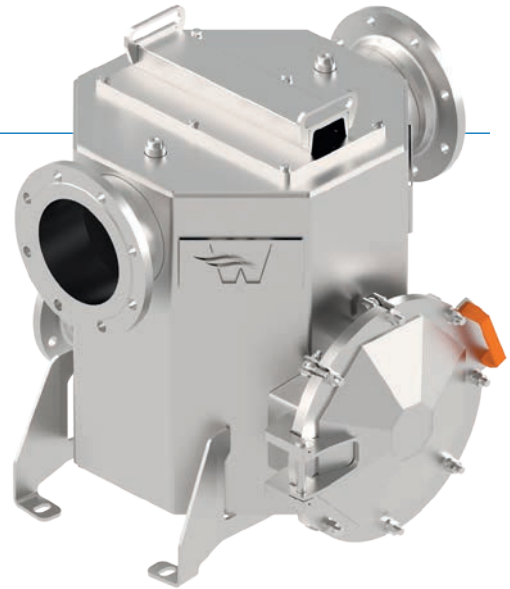
through standard flange and compact, space-efficient construction design. The modular structure enables installation in case of confined space conditions through separate installation.

Further plus points:

- Very rugged implementation.
- Flow-optimised catch container.
- Foreign body removal through wheelbarrow possible with mounting stand.
- Additional rinse connections available.

The WANGEN X-TRACT is a module for the separation of foreign bodies from the pumped medium, for the protection of systems and pumps. Especially in biogas plants and in agricultural technology, stones, wood, metal parts or other foreign bodies are taken out of the pumped medium, in order to ensure a troublefree and wear reduced operation of the system.

Supply materials with a higher density than water (such as stones) sink down through force of gravity and are routed by the screen and the container geometry to the removal opening. Therefore no movable component parts are necessary for the separation of such foreign bodies. The geometry of the screen guarantees continuous cleaning through the inflowing pumped medium. The X-TRACT thus avoids faults and associated down times of the entire system.



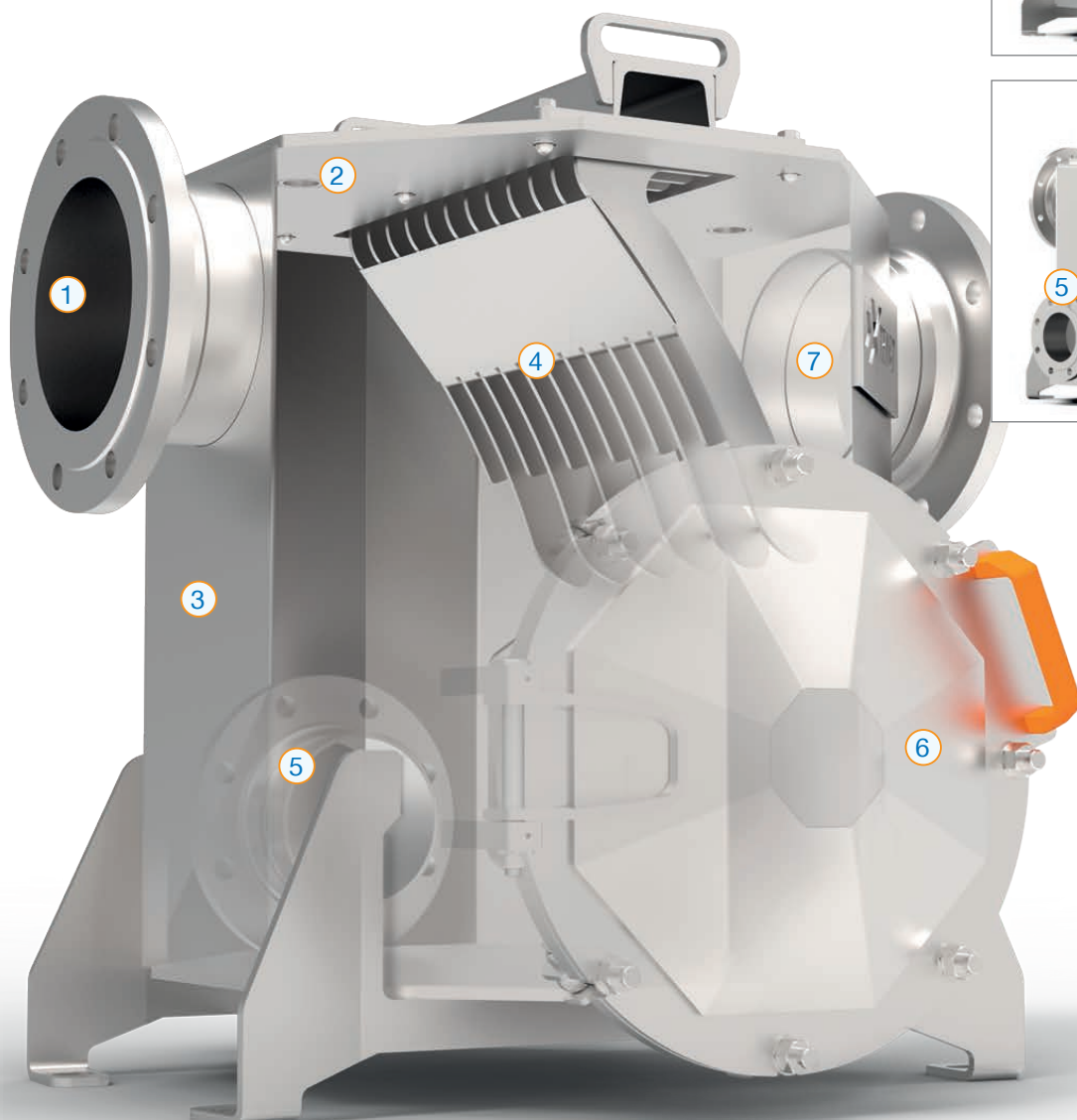
X-TRACT design components:

- ① Media inlet: Pipe connections DN200 / PN10
- ② Connection for sensor to provide optimal monitoring and control
- ③ Debris catchment area
- ④ Various screen for the removal of debris and heavy objects
- ⑤ Flange DN150 / PN10 for the emptying / flushing the catchment area (see picture „rear side“)
- ⑥ Large opening for the removal of settled foreign bodies
- ⑦ Discharge: pipe connections DN200 / PN10

Material: Galvanised milled steel (further materials on request).

Maximum capacity: 1,250 m³/h / 347 l/sec.*

Maximum pressure: 6 bar, preferred on suction side.



* data applies for water as media

WANGEN X-CUT

No external lifting device necessary

for installation and dismantling of the wear parts by a moveable drive unit.

Avoidance of wear, system shutdown and damage

through cutting of foreign bodies to unproblematic lengths and/or sizes.

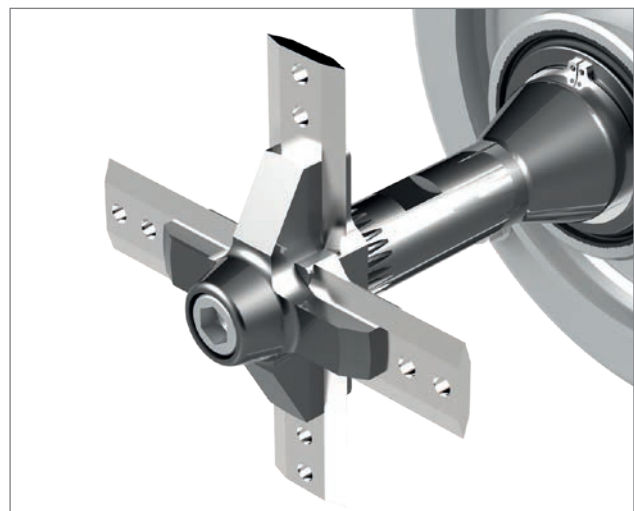
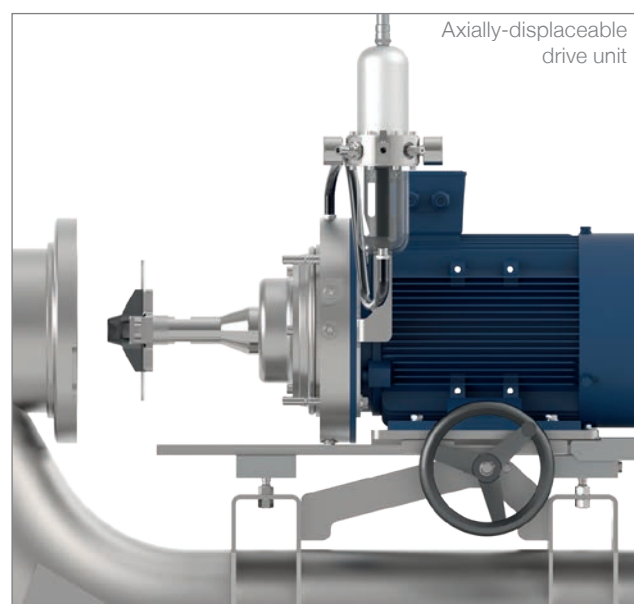
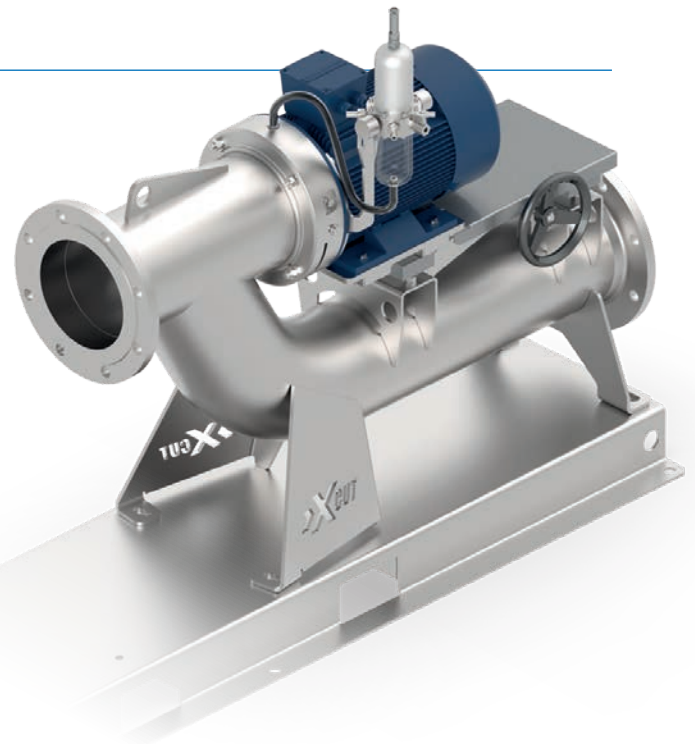
Increased process safety

through further use of the X-TRACT also in case of dismantled X-CUT by means of installation of a blind cover on the flange.

Further plus points:

- Very rugged implementation.
- Compact, space-efficient construction design.
- Cutting tool consisting of wear-resistant steel material.
- Long service lives due to high-quality materials and turning blades. Therefore low life-cycle costs, thanks to low wear costs of the cutting unit.
- Simple and rapid replacement of the cutting knives by means of central tensioning screw.
- Powerful motor guarantees reliable cutting.

The WANGEN X-CUT is a module for the cutting of foreign bodies in the pumped medium. The cutting unit can be adapted optimally to the pumped medium by simple modification. As a result of this, blockages in the system, for example plaited knots or similar, are avoided. Optimum function in extension with the WANGEN X-TRACT.



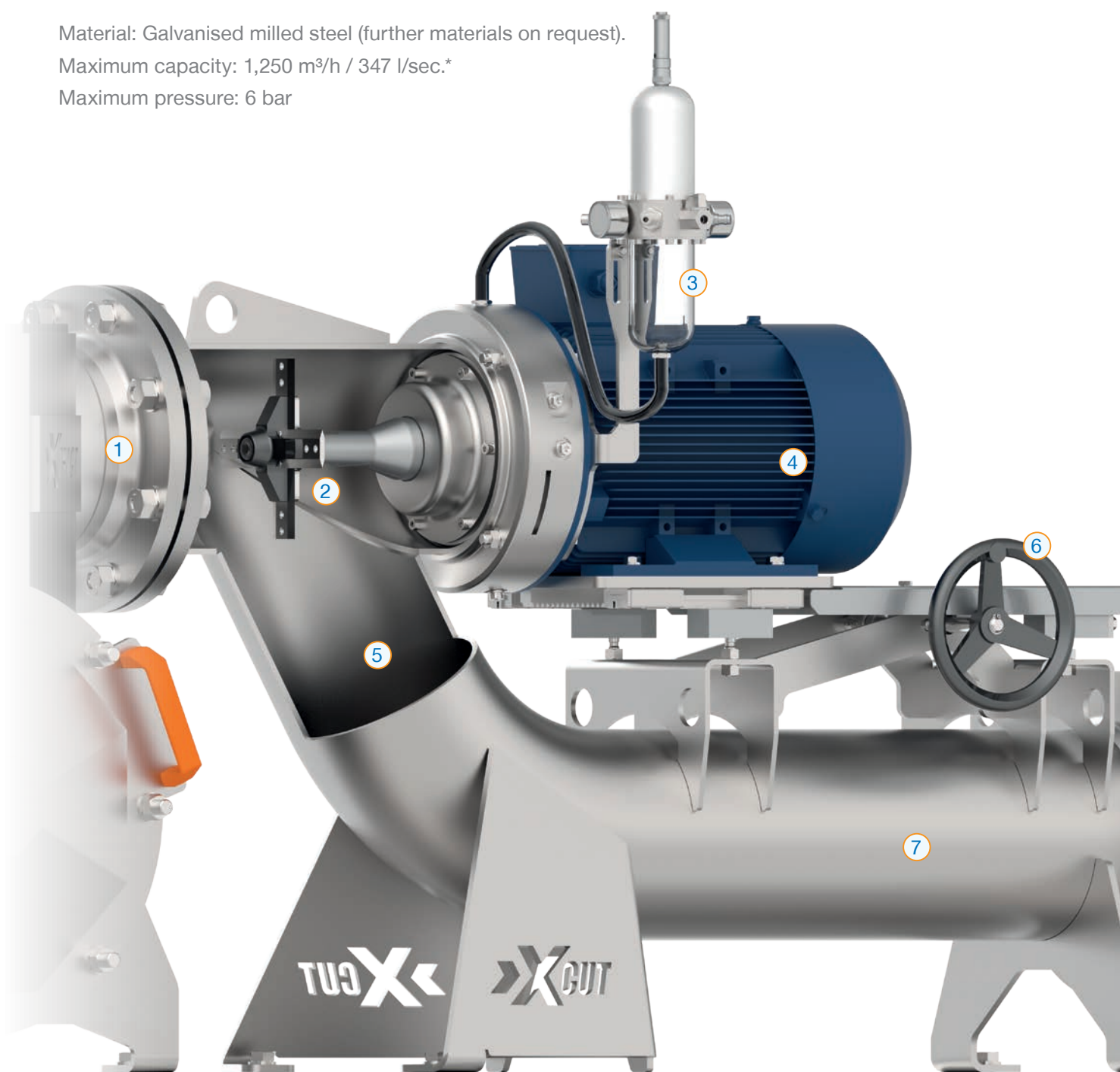
X-CUT design components:

- ① Media inlet
- ② Cutting unit / shredding tool (rotating cutter)
- ③ Storage tank for mechanical seal oil
- ④ Drive unit
- ⑤ Downpipe
- ⑥ Retractable maintenance table for drive unit
- ⑦ Media outlet

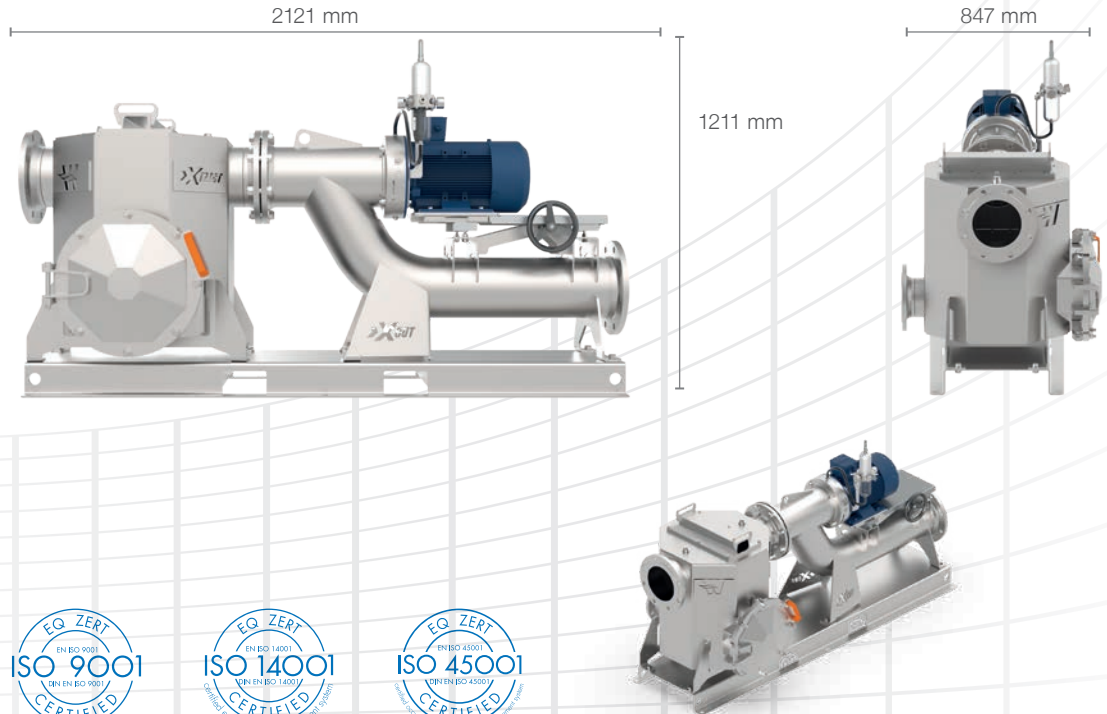
Material: Galvanised milled steel (further materials on request).

Maximum capacity: 1,250 m³/h / 347 l/sec.*

Maximum pressure: 6 bar



* data applies for water as media



WANGEN PUMPEN is certified to:

ISO 9001 (Quality management)

ISO 14001 (Environmental management)

ISO 45001 (Occupational safety and health protection)



distrimex
POMPEN & SERVICE

+31 (0)314 368 444

www.distrimex.nl

